

HDPE PIPING SYSTEMS FOR **DRAIN PIPE SOLUTIONS**





About Us

Acu-Tech® Piping Systems (Acu-Tech) specialises in manufacturing and supplying advanced polyethylene (HDPE) pipe systems tailored for efficient fluid or gas transfer and cable protection. Our state-of-the-art pipe systems are predominantly made from polyethylene (PE) thermoplastics, integrating the latest advancements in pipe technology. These systems are extensively utilised across various industries, including mining, resource extraction, civil engineering, plumbing, rural applications, irrigation, and industrial sectors.

Founded in 2000, Acu-Tech commenced its journey within three shipping containers, evolving into a thriving Australian company that is privately owned and operated. The company's founders and owners actively participate in day-to-day operations, fostering a culture of inspiration, strong leadership, flexible decision-making, and unwavering accountability throughout the organisation.

With our expanding operations nationwide, the dedicated Acu-Tech team is committed to providing the highest level of service and support throughout every stage of your project. Our team members bring decades of collective experience and embrace a positive “can-do” attitude, deeply committed to ensuring the sustained success of your business.

We Care.

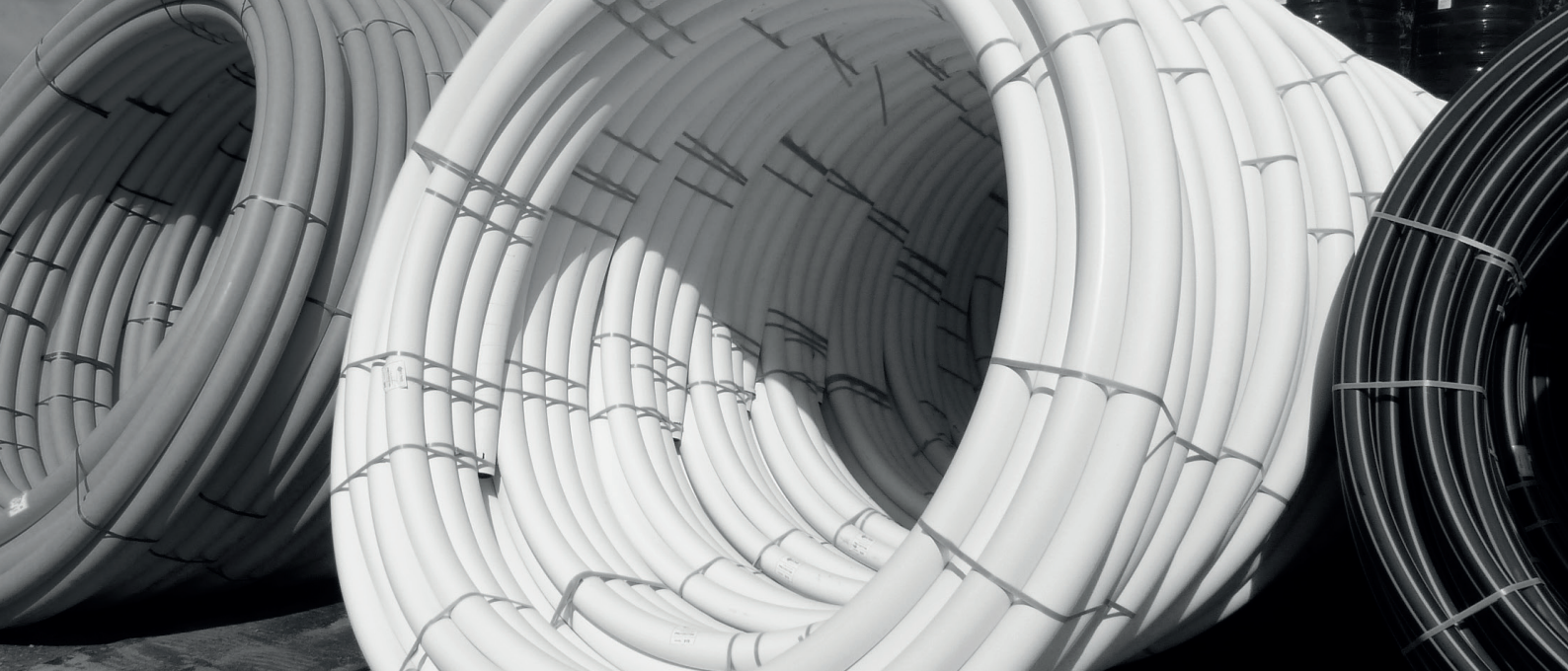
Acu-Tech prioritises high quality customer service and support, focusing on always having a positive ‘can-do’ attitude.

Our Solutions.

With state-of-the-art manufacturing facilities and decades of combined experience, Acu-Tech prioritises continuous innovation and superior products for your HDPE piping needs. Offering turnkey solutions and project management services with a strong emphasis on customer support and success, we ensure tailored solutions that align perfectly with your requirements, whether it's fluid or gas transfer, cable protection, or any other application.

Your Success.

Your Success is our priority. Our durable and cost-effective products, combined with premium client service and support, demonstrate our unwavering commitment to ensuring the long-term success of your business. At Acu-Tech, we are more than just a supplier; we are your partner in success.



OUR VISION

Building Australia's future..

OUR MISSION

Delivering the best pipe solutions for our customers.

OUR VALUES



S

Safety



T

Trustworthy



R

Reliable



I

Innovative



V

Value



E

Energy

Safety

We promote wellbeing first – by following our health and safety practices and speaking up immediately if something seems unsafe.

Trustworthy

We move fast with a high level of trust. We honour our commitments to our customers, team, and community.

Reliable

We have grit, perseverance, and bravery to overcome obstacles, and do what we say we will.

Innovative

We bravely challenge, explore, and implement, effective and improved ways to deliver the best solution.

Value

We are humble, hungry, smart and believe that our team is our greatest asset- every role and every person with great attitude brings value.

Energy

We are hungry, driven by fearless energy 'hustle muscle' to achieve exceptional outcomes by motivating ourselves and those around us to give our best.



Quality Assurance



ISO 9001: DELIVERING EXCELLENCE

At Acu-Tech Piping Systems, we go above and beyond to ensure exceptional quality, epitomised by our ISO 9001 certification - a symbol of excellence in quality assurance.

Our ISO 9001 certification reflects our unwavering commitment to delivering top-tier products and services, while continually refining our processes.



- ✓ Elevating Product Excellence: ISO 9001 certification requires rigorous quality control and assurance measures, ensuring that Acu-Tech's piping systems meet or exceed industry standards and customer expectations.
- ✓ Prioritising Customer Satisfaction: Adhering to ISO 9001 standards illustrates Acu-Tech's dedication to delivering products that consistently fulfill customer needs and preferences. This results in heightened customer satisfaction and unwavering loyalty.
- ✓ Streamlining Efficiency and Enhancing Processes: ISO 9001 encourages organisations to establish efficient processes and continually assess their performance. Acu-Tech utilises this framework to perpetually enhance its operations, leading to increased efficiency and cost-effectiveness.
- ✓ Mitigating Risk: The ISO 9001 framework incorporates robust risk management procedures, enabling Acu-Tech to identify and mitigate potential issues early in the production and delivery process. This proactive approach reduces the likelihood of product defects or service disruptions.
- ✓ Achieving Global Recognition: ISO 9001 certification holds global recognition, opening doors for Acu-Tech to compete in international markets and expand its customer base.

Information presented here is for reference only and may not be complete. All dimensions are nominal and may vary from actual dimension. For accurate dimensional data and any other information please contact sales@acu-tech.com.au



WHAT SETS US APART?

Consistent reliability: We consistently provide the ideal solution at the most cost-effective value.

Client-focused approach: We actively listen and collaborate closely with our clients to grasp the challenges they face.

Tailored solutions: Leveraging our materials, technology, training, and installation methods, we help determine and implement the right solutions for our clients.

Problem-solving expertise: Leveraging our vast knowledge and experience, we address challenges and deliver effective solutions.

Industry-specific delivery: We excel in providing bespoke pipeline solutions specifically tailored to the distinctive requirements of the industries we serve.

DRAINAGE PIPE

DRAIN PIPE SIZES

PIPE SIZE (mm)	NOMINAL BORE	CODE	LENGTH	SDR
50	40	DBK05021005	5 meter	SDR21
56	50	DBK05621005	5 meter	SDR21
63	50	DBK06321005	5 meter	SDR21
75	65	DBK07526005	5 meter	SDR26
90	80	DBK09026005	5 meter	SDR26
110	100	DBK11026005	5 meter	SDR26
125	115	DBK12526005	5 meter	SDR26
160	150	DBK16026005	5 meter	SDR26
200	184	DBK20026006	6 meter	SDR26
200	187	DBK20033006	6 meter	SDR33
250	230	DBK25026006	6 meter	SDR26
250	234	DBK25033006	6 meter	SDR33
315	290	DBK31526006	6 meter	SDR26
315	296	DBK31533006	6 meter	SDR33



DRAIN EF COUPLING



FITTING SIZE (mm)	NOMINAL BORE	CODE	BOX QTY
50	40	350003	10
56	50	350004	10
63	50	350005	10
75	65	350007	10
90	80	350009	10
110	100	350011	10
125	115	350013	5
160	150	350015	5

DRAIN EF COUPLING (LARGE Ø)



FITTING SIZE (mm)	NOMINAL BORE	CODE	BOX QTY
200	185	20160200	4
250	225	20160250	2
315	300	20160315	1

88.5° BEND



FITTING SIZE (mm)	NOMINAL BORE	CODE	BOX QTY
50	40	304003	5
56	50	304004	15
63	50	304005	15
75	65	304007	15
90	80	304009	10
110	100	304011	15
125	115	304013	10
160	150	304015	5

90° SEGMENTED BEND



FITTING SIZE (mm)	NOMINAL BORE	CODE	BOX QTY
200	185	304017	1
250	225	304021	1
315	300	304023	1

Information presented here is for reference only and may not be exhaustive. All dimensions are nominal and may vary from actual dimension. For accurate dimensional data and any other details, please contact sales@acu-tech.com.au



FITTINGS

45° BEND



FITTING SIZE (mm)	NOMINAL BORE	CODE	BOX QTY
50	40	306005	15
56	50	306006	15
63	50	306007	15
75	65	306009	10
90	80	306011	15
110	100	306013	10
125	115	306015	10
160	150	306017	1

45° SEGMENTED BEND



FITTING SIZE (mm)	NOMINAL BORE	CODE	BOX QTY
200	185	306019	1
250	225	306021	1
315	300	306023	1

30° BEND



FITTING SIZE (mm)	NOMINAL BORE	CODE	BOX QTY
110	100	302013	1
160	150	302017	1

15° BEND



FITTING SIZE (mm)	NOMINAL BORE	CODE	BOX QTY
110	100	301542	1
160	150	301550	1

Information presented here is for reference only and may not be exhaustive. All dimensions are nominal and may vary from actual dimension. For accurate dimensional data and any other details, please contact sales@acu-tech.com.au

60° SEGMENTED BEND



FITTING SIZE (mm)	NOMINAL BORE	CODE	BOX QTY
110	100	303411	1
125	115	303413	1
160	150	303415	1
200	185	303417	1
250	225	303419	1
315	300	303421	1

15° SEGMENTED BEND



FITTING SIZE (mm)	NOMINAL BORE	CODE	BOX QTY
110	100	303111	1
125	115	303113	1
160	150	303115	1
200	185	303117	1
250	225	303119	1
315	300	303121	1

30° SEGMENTED BEND



FITTING SIZE (mm)	NOMINAL BORE	CODE	BOX QTY
110	100	303211	1
125	115	303213	1
160	150	303215	1
200	185	303217	1
250	225	303219	1
315	300	303221	1

5° SEGMENTED BEND



FITTING SIZE (mm)	NOMINAL BORE	CODE	BOX QTY
110	100	303011	1
125	115	303013	1
160	150	303015	1
200	185	303017	1
250	225	303019	1
315	300	303021	1

Information presented here is for reference only and may not be exhaustive. All dimensions are nominal and may vary from actual dimension. For accurate dimensional data and any other details, please contact sales@acu-tech.com.au

FITTINGS

45° T Junction



FITTING SIZE (mm)	NOMINAL BORE	CODE	BOX QTY
50 x 50	40 x 40	309005	30
56 x 50	50 x 40	310006	30
56 x 56	50 x 50	309006	30
63 x 50	50 x 40	310007	30
63 x 56	50 x 50	310008	30
63 x 63	50 x 50	309007	30
75 x 50	65 x 40	310011	30
75 x 56	65 x 50	310012	30
75 x 63	65 x 50	310014	30
75 x 75	65 x 65	309009	20
90 x 50	80 x 40	310015	20
90 x 56	80 x 50	310006	20
90 x 63	80 x 50	310018	20
90 x 75	80 x 65	310010	20
90 x 90	80 x 80	309011	20
110 x 50	100 x 40	310019	20
110 x 56	100 x 50	310020	20
110 x 63	100 x 50	310021	20
110 x 75	100 x 65	310023	20
110 x 90	100 x 80	310025	20
110 x 110	100 x 100	309013	10
125 x 110	115 x 100	310037	10
125 x 125	115 x 115	309013	10
160 x 110	150 x 100	310039	5
160 x 125	150 x 115	310041	5
160 x 160	150 x 150	309017	5

45° Fabricated Junction



FITTING SIZE (mm)	NOMINAL BORE	CODE	BOX QTY
200 x 110	185 x 100	310043	1
200 x 125	185 x 115	310045	1
200 x 160	185 x 150	310047	1
200 x 200	185 x 185	309019	1
250 x 110	225 x 100	310049	1
250 x 125	225 x 115	310051	1
250 x 160	225 x 150	310053	1
250 x 200	225 x 185	310055	1
250 x 250	225 x 225	309021	1
315 x 110	300 x 100	310057	1
315 x 125	300 x 115	310059	1
315 x 160	300 x 150	310061	1
315 x 200	300 x 185	310063	1
315 x 250	300 x 225	310065	1
315 x 315	300 x 300	309023	1

45° Double Junction



FITTING SIZE (mm)	NOMINAL BORE	CODE	BOX QTY
110 x 110	100 x 100	314005	10

Information presented here is for reference only and may not be exhaustive. All dimensions are nominal and may vary from actual dimension. For accurate dimensional data and any other details, please contact sales@acu-tech.com.au

85.5° Junction



FITTING SIZE (mm)	NOMINAL BORE	CODE	BOX QTY
50 x 50	40 x 40	312005	30
56 x 50	50 x 40	313002	30
56 x 56	50 x 50	312006	30
63 x 50	50 x 40	313012	30
63 x 56	50 x 50	313032	30
63 x 63	50 x 50	312007	30
75 x 50	65 x 40	313005	30
75 x 56	65 x 50	313006	30
75 x 63	65 x 50	313010	30
75 x 75	65 x 65	312009	20
90 x 50	80 x 40	313009	20
90 x 56	80 x 50	310006	20
90 x 63	80 x 50	313028	20
90 x 75	80 x 65	313036	20
90 x 90	80 x 80	312011	20
110 x 50	100 x 40	313013	20
110 x 56	100 x 50	313014	20
110 x 63	100 x 50	313015	20
110 x 75	100 x 65	313017	20
110 x 90	100 x 80	313019	20
110 x 110	100 x 100	312013	10
160 x 110	150 x 100	313023	5
160 x 160	150 x 150	312017	5

85.5° Fabricated Junction



FITTING SIZE (mm)	NOMINAL BORE	CODE	BOX QTY
200 x 110	185 x 100	313027	1
200 x 125	185 x 115	313029	1
200 x 160	185 x 150	313031	1
200 x 200	185 x 185	312019	1
250 x 110	225 x 100	313033	1
250 x 125	225 x 115	313035	1
250 x 160	225 x 150	313037	1
250 x 200	225 x 185	313039	1
250 x 250	225 x 225	312021	1
315 x 110	300 x 100	313041	1
315 x 125	300 x 115	313043	1
315 x 160	300 x 150	313045	1
315 x 200	300 x 185	313047	1
315 x 250	300 x 225	313049	1
315 x 315	300 x 300	312023	1

85.5° Swept Junction



FITTING SIZE (mm)	NOMINAL BORE	CODE	BOX QTY
110 x 110	100 x 100	312025	10

Information presented here is for reference only and may not be exhaustive. All dimensions are nominal and may vary from actual dimension. For accurate dimensional data and any other details, please contact sales@acu-tech.com.au



FITTINGS

88.5° Double Junction



FITTING SIZE (mm)	NOMINAL BORE	CODE	BOX QTY
110 x 110	100 x 100	318005	10

NOTE: Larger diameters can be fabricated to order.

Horizontal Inspection Access Pipe



FITTING SIZE (mm)	NOMINAL BORE	CODE	BOX QTY
50	40	348003	1
56	50	348004	1
63	50	348005	1
75	65	348007	1
90	80	348009	1
110 Hortz.	100	348011	1
110 Vert.	100	348011B	1
160 x 110	150 x 100	348014	1
160 x 160	150 x 150	348015	1

Expansion Socket



FITTING SIZE (mm)	NOMINAL BORE	CODE	BOX QTY
50	40	328003	15
56	50	328004	15
63	50	328005	15
75	65	328007	10
90	80	328009	15
110	100	328012	10
160	150	328015	1
200	185	328017	1
250	225	328019	1
315	300	328021	1

Palazzi Trap



FITTING SIZE (mm)	NOMINAL BORE	CODE	BOX QTY
110 x 56	100 x 50	811056	1
110 x 63	100 x 50	811063	1
110 x 75	100 x 65	811075	1
110 x 110	100 x 100	811110	1
160 x 110	150 x 100	811161	1
160 x 160	150 x 150	811160	1

Information presented here is for reference only and may not be exhaustive. All dimensions are nominal and may vary from actual dimension. For accurate dimensional data and any other details, please contact sales@acu-tech.com.au

Ring Seal Socket



NOTE: Larger diameters can be fabricated to order.

FITTING SIZE (mm)	NOMINAL BORE	CODE	BOX QTY
50	40	324003	30
56	50	324004	20
63	50	324005	20
75	65	324007	20
90	80	324009	15
110	100	324012	10
160	150	324015	10
200	185	324017	1
250	225	324019	1
315	300	324021	1

P Trap - Fixed Style



FITTING SIZE (mm)	NOMINAL BORE	CODE	BOX QTY
50	40	855258	10
56	50	856518	10
63	50	856518	10
75	65	857528	10
90	80	859538	10
110	100	860548	10
160	150	860550	5

P Trap - Adjustable Style



FITTING SIZE (mm)	NOMINAL BORE	CODE	BOX QTY
50	40	845258	10
56	50	846518	10
63	50	846519	10
75	65	847528	10
90	80	849538	10
90 x 75	80 x 65	849538P	10
110	100	850548	10
110 x 75	100 x 65	850548P	10
160	150	850550	5

S&P Combination Trap



FITTING SIZE (mm)	NOMINAL BORE	CODE	BOX QTY
56	50	320150B	20

Information presented here is for reference only and may not be exhaustive. All dimensions are nominal and may vary from actual dimension. For accurate dimensional data and any other details, please contact sales@acu-tech.com.au



FITTINGS

Eccentric Reducer



FITTING SIZE (mm)	NOMINAL BORE	CODE	BOX QTY
56 x 50	50 x 40	358002	30
63 x 50	50 x 40	358005	30
63 x 56	50 x 50	358006	30
75 x 50	65 x 40	358009	30
75 x 56	65 x 50	358010	30
75 x 63	65 x 50	358011	30
90 x 50	80 x 40	358015	20
90 x 56	80 x 50	358016	20
90 x 63	80 x 50	358017	20
90 x 75	80 x 65	358019	20
110 x 50	100 x 40	358023	20
110 x 56	100 x 50	358024	20
110 x 63	100 x 50	358025	20
110 x 75	100 x 65	358027	20
110 x 90	100 x 80	358059	20
125 x 110	115 x 100	358031	10
160 x 110	150 x 100	358038	5
160 x 125	150 x 115	358039	5
200 x 110*	185 x 100	358045	1
200 x 160*	185 x 150	358049	1
250 x 160*	225 x 150	358050	1
250 x 200*	225 x 185	358055	1
315 x 200*	300 x 185	358061	1
315 x 250*	300 x 225	358063	1

Concentric Reducer



FITTING SIZE (mm)	NOMINAL BORE	CODE	BOX QTY
56 x 50	50 x 40	336002	30
63 x 50	50 x 50	336005	30
63 x 56	50 x 50	336006	30
75 x 50	65 x 40	336007	30
75 x 56	65 x 50	336010	30
75 x 63	65 x 50	336011	30
90 x 50	80 x 40	336015	20
90 x 56	80 x 50	336016	20
90 x 63	80 x 50	336017	20
90 x 75	80 x 65	336019	20
110 x 50	100 x 40	336023	20
110 x 56	100 x 50	336024	20
110 x 63	100 x 50	336025	20
110 x 75	100 x 65	336027	20
110 x 90	100 x 80	336029	20
160 x 110	150 x 100	336041	5

In-Pipe Adapter



FITTING SIZE (mm)	NOMINAL BORE	BOX QTY
110	100	1

Information presented here is for reference only and may not be exhaustive. All dimensions are nominal and may vary from actual dimension. For accurate dimensional data and any other details, please contact sales@acu-tech.com.au

Bucket Trap



FITTING SIZE (mm)	NOMINAL BORE	CODE
250 x 110	225 x 100	BT25011
250 x 160	225 x 150	BT25016

Note:

- Inlets or adapters to DWV welded into order.
- Includes Standard 5mm Stainless Steel Grate.
- Anti-skid coating available on request.

Stainless Steel Basket



Type A



Type C

Type	Description	CODE
A- Solid Bottom	For sand and silt, etc.	SSB25A
C- Fully Perforated	For food prep areas, etc.	SSB25C

WC Pan Collar



FITTING SIZE (mm)	NOMINAL BORE	CODE	BOX QTY
110	100	352003	1

Weld on End Cap



FITTING SIZE (mm)	NOMINAL BORE	CODE	BOX QTY
50	40	340625	10
56	50	340626	10
63	50	340627	10
75	65	340628	10
90	80	340629	10
110	100	340630	10
125	115	340631	1
160	150	340633	1
200	185	340634	1
250	225	340635	1
315	300	340636	1

Information presented here is for reference only and may not be exhaustive. All dimensions are nominal and may vary from actual dimension. For accurate dimensional data and any other details, please contact sales@acu-tech.com.au



FITTINGS

Male Thread Adapter



FITTING SIZE (mm)	NOMINAL BORE	CODE	BOX QTY
50	40mm (1½")	23545040	1
56	50mm (2")	23545650	1
63	50mm (2")	2356350	1
75	65mm (2½")	23547565	1
90	80mm (3")	23549080	1
110	100mm (4")	23541110	1

Stop End Complete



FITTING SIZE (mm)	NOMINAL BORE	CODE	BOX QTY
50	40	340003	15
56	50	340004	15
63	50	340005	15
75	65	340007	10
90	80	340009	15
110	100	340011	15
160	150	340016	1

Nut & Tail



FITTING SIZE (mm)	NOMINAL BORE	CODE	BOX QTY
50	1½"	924757	1
50	2"	924758	1
56	1½"	92459	1
56	2"	924760	1
63	2"	92461	1

4 Way Riser 88.5°



FITTING SIZE (mm)	NOMINAL BORE	CODE	BOX QTY
90 x 63 x 50	80 x 50 40	318710	10
110 x 56 x 50	100 x 50 x 40	318712	10
110 x 56	100 x 50	318715	10
110 x 63	100 x 50	318719	10
110 x 63 x 50	100 x 50 x 40	318720	10
110 x 75 (3-Way)	100 x 65	318721	10

Information presented here is for reference only and may not be exhaustive. All dimensions are nominal and may vary from actual dimension. For accurate dimensional data and any other details, please contact sales@acu-tech.com.au

DWV to HDPE Adapter



NOTE:

1. Flow from DWV to HDPE.
2. *HDPE Drain EF Coupling required.

DWV SIZE (mm)	HDPE SIZE	CODE	1BOX QTY
40	*50	325040	1
50	50	325050	1
40	56	325640	1
50	*56	324004D	1
50	*63	326350	1
65	63	326365	1
65	*75	327565	1
80	75	327565	1
80	*90	329080	1
100	*110	324011D	1
150	*160	324015D	1
175	*200	324017D	1
225	*250	324019D	1
300	*315	324021D	1

Copper to HDPE Rubber Grommet Adapter



FITTING SIZE (mm)	NOMINAL BORE	CODE	BOX QTY
40	50	334005	1
50	63	334009	1

NOTE: Flow from Copper to HDPE.

HDPE to DWV Adapter



FITTING SIZE (mm)	NOMINAL BORE	CODE	BOX QTY
110	100	321011	1
160	150	321516	1

NOTE: Flow from HDPE to DWV.

Copper to HDPE Adapter



NOTE:

1. Flow from Copper to HDPE.
2. *HDPE Drain EF Coupling required.

DWV SIZE (mm)	HDPE SIZE	CODE	1BOX QTY
50	*50	324003C	1
50	*56	335650	1
65	*63	336365	1
65	*75	337565	1
80	*75	337580	1
80	*90	339080	1
100	*100	331110	1

Information presented here is for reference only and may not be exhaustive. All dimensions are nominal and may vary from actual dimension. For accurate dimensional data and any other details, please contact sales@acu-tech.com.au



FITTINGS

Puddle Flange



FITTING SIZE (mm)	NOMINAL BORE	CODE	BOX QTY
50	40	344050	1
56	50	344056	1
63	50	344063	1
75	65	344075	1
90	80	344090	1
110	100	344110	1
160	150	344160	1
200	175	344200	1
250	225	344250	1
315	300	344315	1

NOTE: Non-Standard Puddle Flanges made to order.

Floor Grate - Drop in Style

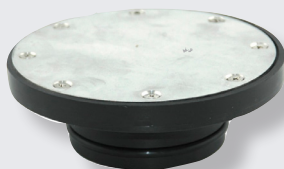


FITTING SIZE (mm)	NOMINAL BORE	CODE	BOX QTY
110	100	321103	1
160	150	321603	1

NOTE: Comes in standard with 2mm plain finish stainless steel gate.

Anti-slip coating available on request.

Bolted Tap Screw - Drop in Style



FITTING SIZE (mm)	NOMINAL BORE	CODE	BOX QTY
90 x 63 x 50	80 x 50 40	318710	10
110 x 56 x 50	100 x 50 x 40	318712	10

NOTE: Comes in standard with 2mm plain finish stainless steel gate.

Anti-slip coating available on request.

Information presented here is for reference only and may not be exhaustive. All dimensions are nominal and may vary from actual dimension. For accurate dimensional data and any other details, please contact sales@acu-tech.com.au

Stub Flange Adapter



FITTING SIZE (mm)	NOMINAL BORE	CODE	BOX QTY
50	40	34160050	15
56	50	34160056	15
63	50	34160063	15
75	65	34160075	10
90	80	34160090	10
110	100	34160110	10
125	115	34160125	10
160	150	34160160	1
200	185	43160200	1
250	225	34160250	1
315	300	34160315	1

Bolt Sets - Table D Steel Flange Connection



NOTE: Also available in stainless steel

HDPE FLANGE SIZE (mm)	STEEL FLANGE SIZE METRIC	MAX. FLANGE THICKNESS	CODE GALVANISED M/S
50	40	14	9661 0050
56	50	15	9661 0056
63	50	16	9661 0063
75	65	24	9661 0075
90	80	20	9661 0090
110	100	40	9662 0110
125	125	40	9662 0125
160	150	30	9662 0160
200	200	36	9662 0200
250	250	38	9662 0250
315	300	36	9662 0315

GMS Table D Backing Flange



FITTING SIZE (mm)	NOMINAL FLANGE SIZE	NOMINAL INCH SIZE	CODE
50	40	1½"	5441 0500
56	50	2"	5441 5663
63	50	2"	5441 0063
75	65	2½"	5441 0075
90	80	3"	5441 0090
110	100	4"	5441 0110
125	100	4"	5441 4125
125	115	5"	5441 5125
160	150	6"	5441 0160
200	200	8"	5441 0200
250	250	10"	5441 0250
315	300	12"	5441 0315

Gasket - Full Face 3mm Rubber Insertion



FITTING SIZE (MM)	NOMINAL BORE	CODE	BOX QTY
50	40	9685 0050	1
56	50	9685 0056	1
63	50	9685 0063	1
75	65	9685 0075	1
90	80	9685 0090	1
110	100	9685 0110	1
125	115	9685 0125	1
160	150	9685 0160	1
200	185	9685 0200	1
250	225	9685 0250	1
315	300	9685 0315	1

Information presented here is for reference only and may not be exhaustive. All dimensions are nominal and may vary from actual dimension. For accurate dimensional data and any other details, please contact sales@acu-tech.com.au

EQUIPMENT

Electrofusion Welding Machine



SIZE RANGE (mm)	CODE
50- 160	700160

Acu-Tech Polyweld Wipes



PRODUCT	QTY	CODE	BOX QTY
Wipes	75 wipes	946666	15

Electrofusion Welder Machine



SIZE RANGE (mm)	CODE
200- 630*	SBOX-MAX

Pipe Scraper



PRODUCT	SIZE (mm)	CODE	BOX QTY
Scraper	50 x 315	947777	15

Information presented here is for reference only and may not be exhaustive. All dimensions are nominal and may vary from actual dimension. For accurate dimensional data and any other details, please contact sales@acu-tech.com.au

Our Capabilities

Technical Support:

We provide technical support for designers, engineers, and installers.

Training:

Through our training partner we can offer our clients the ability to train staff with nationally accredited polyethylene plastic welding courses.

QA/QC:

We are also qualified to provide Quality Assurance and Quality Control documentation.

Testing:

We have a fully accredited in-house NATA testing facility to provide destructive and pressure testing as per project requirements.

Equipment Hire, Sales, and Servicing:

Acu-Tech offers welding equipment available for hire or sale and providing servicing and calibration for welders.

Transport:

Products are delivered using our own fleet of trucks ensuring that the products are delivered directly to site in a safe and timely manner.

**National Manufacturer of
HDPE piping systems**





Transport & Warehouse Logistics

Our transportation yard has the capacity to load up to 15 trucks daily, accommodating a diverse range of pipes with lengths of up to 20 meters and diameters of 800mm. Our dedicated transport team is steadfast in their commitment to ensuring orders are delivered in full and on time, with safety as our top priority.

We offer a comprehensive project solution through our dedicated fleet of trucks and skilled drivers.

These professionals undergo rigorous training to guarantee efficient unloading and an unwavering commitment to delivering exceptional service.

Our large transportation fleet has the capability to accommodate a diverse range of pipes with lengths of up to 21 meters and diameters up to 1200mm.

Our dedicated transport team is steadfast in their commitment to ensuring orders are delivered in full and on time, with safety as our top priority.

With the added assurance of our overhead permits and Heavy Vehicle Accreditation, you can place full trust in us for the secure and timely delivery of your goods, ensuring a smooth transportation experience that perfectly aligns with all your project needs.

Training & Testing Facility

Polyweld Tech Academy is accredited to deliver the following Nationally Recognised plastics welder training programs:

- Join Polyethylene Plastic Pipelines using Butt Welding (PMBWELD301E)
- Join Polyethylene Plastic Pipelines using Electrofusion Welding (PMBWELD302E)
- Weld Plastic using Extrusion Techniques (PMBWELD309E)

With facilities in Brisbane, Kalgoorlie, Melbourne, South Australia, New South Wales, Perth and Queensland, Polyweld Tech Academy provides flexible on-site training at any location convenient for our clients.

Whether you are based nationwide across Australia or require offshore international training, our expert team is ready to deliver comprehensive Poly welding Training tailored to your needs.

The combination of training and testing gives us helpful insight into the areas of welding that may require attention.

For more information and course enrolments: **1300 36 7659 (GO POLY)**
info@polyweldtech.com.au | www.polyweldtech.com.au

Fabrication Services

Our fully qualified ACU-FAB team has decades of combined experience, we can fabricate almost anything from poly pipe and sheet.

We work in partnership with our clients to provide bespoke, pre-fabricated solutions and can provide a diverse range of products including custom degree bends, assemblies, spool packages, tank fabrication and strainers, manufactured in our 6000m² fully equipped fabrication facility.

We pride ourselves in working to the highest possible standards, in accordance with AS/NZS 4131, AS/NZS 4130 and AS/NZS 4129.

Equipment Hire & Servicing

Acu-Tech hires out welding equipment and provides service and calibration for welders.

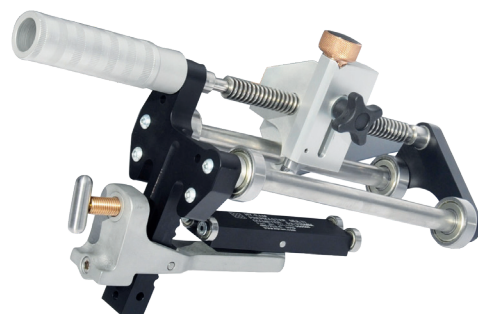
Our hire division has a full range of butt welders, extrusion welders and electrofusion welders that can weld pipe diameters from 20mm up to 1000mm. This includes a wide variety of electrofusion equipment and butt welders, which can be useful if your team is trained to use a particular model.

If you are welding on a site without power supply, we also provide portable generators, designed to be used with poly welding equipment.

New equipment is available for sale if you prefer to invest in equipment upfront.

Work with Acu-Tech and a recommended financial advisor to facilitate capital equipment purchases. Contact our hire sales team for more information.

View the Equipment Hire website:
<https://acu-techhire.com.au/>





The HDPE Pipe Systems Specialists

Contact us

1300 270 270

SALES@ACU-TECH.COM.AU

ABN: 68 626 756 223

WE CARE. OUR SOLUTIONS. YOUR SUCCESS.

Perth • Kalgoorlie • Brisbane • Melbourne

ACU-TECH.COM.AU