

# COMPANY & PRODUCT OVERVIEW



---

[JAGPOLY.COM.AU](http://JAGPOLY.COM.AU)

# COMPANY INTRODUCTION

## Introduction

**A**cu-Tech Pty Ltd joined forces with JAG Poly, a distinguished name renowned for its excellence in manufacturing high-density polyethylene (HDPE) piping systems

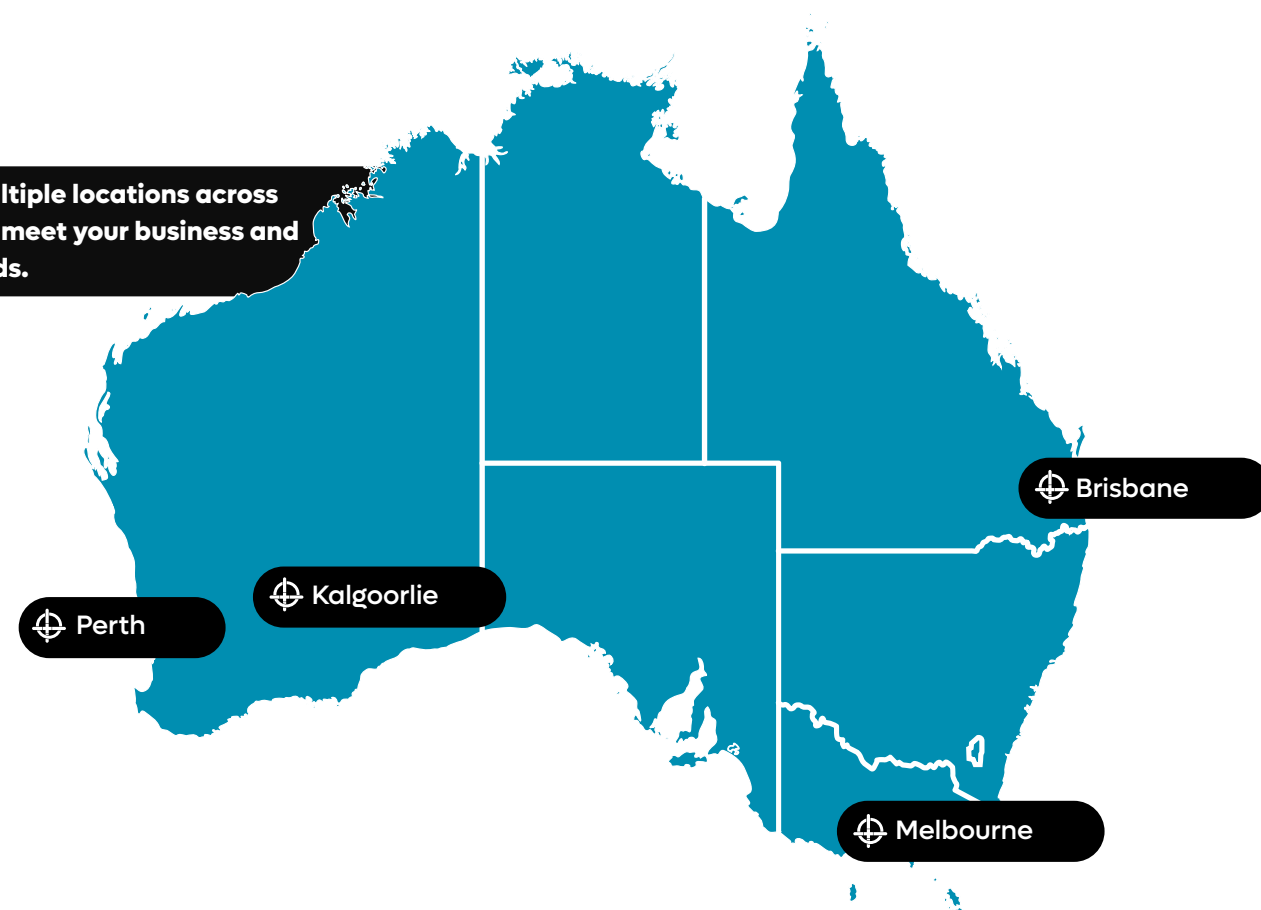
This merger reflects our steadfast commitment to delivering reliable, durable, and sustainable piping solutions that align seamlessly with our core values. The collaboration is set to fortify our market presence across Perth, Melbourne, Brisbane, and Australia as a whole, enhancing our ability to cater to diverse industries, including mining, infrastructure, agriculture, and water utilities.

Our clients can look forward to an extended product portfolio that continues to meet the high standards of quality and exceptional customer service they have come to expect. The synergy between Acu-Tech and JAG Poly is poised to drive innovation in the polyethylene piping industry, fostering a commitment to excellence.

As we embark on this exciting journey together, the teams at Acu-Tech and JAG Poly are confident that this collaboration will not only reinforce our positions as industry leaders but also bring added value to our existing and new clients. Together, we are setting new standards for quality in the poly-pipe sector.

**CRAFTING PERFECTION**  
*Seamless Solutions*  
*Superior Performance*

**We have multiple locations across Australia to meet your business and project needs.**







## About JAG POLY

JAG Poly is a leading provider of innovative polyethylene fabrication solutions, specialising in a wide range of products designed to meet the diverse needs of industries worldwide.

With a commitment to quality, sustainability, and customer satisfaction, JAG Poly has established itself as a trusted name in the polyethylene fabrication industry.

From flexible packaging solutions to robust industrial applications, JAG Poly offers a comprehensive range of polyethylene products, including:

### OUR MISSION

Our mission is to revolutionise the polyethylene industry through cutting-edge technology, sustainable practices, and unwavering commitment to customer satisfaction. We aim to provide superior polyethylene solutions that enhance efficiency, durability, and environmental responsibility.

#### Specialty Polyethylene:

Customised polyethylene solutions tailored to unique applications, providing unparalleled performance and reliability.

#### Industrial Polyethylene:

High-performance polyethylene engineered to withstand the toughest industrial environments while maximising efficiency and safety.

## Our Commitment to Excellence



We pride ourselves on a **foundation of trust, built over years of combined team experience**. Our industry-leading experts, with the direct involvement of our company's Directors, ensure swift, effective decision-making to address and meet your needs promptly. Our extensive portfolio, featuring numerous completed projects, stands testament to our capability and reliability, with references available to vouch for our excellence.

**We place immense value on confidence**, working closely with each client to deeply understand their business, meet their specific needs, and prioritise their goals. Our unmatched proficiency in delivering precisely as promised, on schedule, and with comprehensive documentation stems from our role as the manufacturer, allowing us total quality control from raw materials to the final delivery.

**Our technical expertise and support services** are unparalleled, designed to assist designers, engineers, and installers.

- In collaboration with a Registered Training Organisation, we offer specialised welding training, enhancing the skills and knowledge within the industry.
- Our NATA accredited laboratory is equipped to perform destructive joint and material testing, complemented by on-site Quality Assurance (QA) services, ensuring the highest standards of quality and reliability.

#### Quality assurance is at the core of our operations.

- We are certified in Quality Management Systems, including ISO 9001 and ISO/TS 29001, catering specifically to the demanding requirements of the petroleum, petrochemical, and natural gas industries.
- Our products, including polyethylene (PE) pipes and fittings for pressure applications, are certified to meet and exceed the stringent AS/NZS 4130:2018 and AS/NZS 4129:202 standards, respectively. This commitment to quality ensures that we provide only the best, most reliable products to our clients.





# HOW WE SERVE

## OUR COMMITMENT TO EXCELLENCE & CUSTOMER SATISFACTION

At JAG Poly, our commitment to excellence extends beyond industries; it reaches consumers at the heart of everyday life. With a consumer-focused approach, we strive to revolutionise the way people interact with polyethylene products, offering solutions that enhance convenience, safety, and sustainability in their daily experiences.

### → **Innovation for Consumer Needs:**

We understand that consumers seek products that simplify their lives while aligning with their values. That's why JAG Poly invests heavily in research and development to innovate products that cater to these needs.

### → **Safety and Reliability:**

Consumer trust is paramount to us at JAG Poly. We prioritise safety and reliability in every product we offer, ensuring that consumers can use our polyethylene solutions with confidence. From stringent quality control measures to compliance with industry standards and regulations, we go above and beyond to uphold the trust that consumers place in our brand.

### → **Sustainability as a Priority:**

As stewards of the environment, we recognise the importance of sustainability in our products and practices. JAG Poly is dedicated to minimising our environmental footprint by using recycled materials, reducing waste in production processes, and exploring renewable resources. By offering eco-friendly alternatives without compromising on performance, we empower consumers to make environmentally conscious choices without sacrificing quality.

### → **Customised Solutions for Diverse Needs:**

At JAG Poly, we understand that every consumer is unique, with distinct preferences and requirements. That's why we offer customisable solutions tailored to meet diverse consumer needs.

## What sets JAG Poly apart?

- **Innovation:**  
Constantly developing cutting-edge polyethylene solutions to meet evolving needs.
- **Customisation:**  
Tailoring products to specific client requirements for maximum flexibility.
- **Sustainability:**  
Prioritising eco-friendly practices throughout operations.
- **Quality:**  
Adhering to strict standards to ensure reliable, high-quality products.
- **Customer Service:**  
Offering exceptional support and assistance to clients at every stage.



# PRODUCT INTRODUCTION

## Product Overview

**W**e lead the way in designing and manufacturing custom fabrications from polyethylene with a relentless focus on innovation, quality, and sustainability.

### Our comprehensive portfolio encompasses:

**Quality Craftsmanship:** Quality is at the core of everything we do at Jag Poly. From the initial design phase to the final production, we adhere to rigorous quality standards to ensure that every fabrication meets or exceeds our customers' expectations. Our commitment to quality craftsmanship is evident in the durability, reliability, and performance of our products.

**Sustainable Solutions:** As stewards of the environment, Jag Poly is dedicated to sustainability in all aspects of our operations. We utilise eco-friendly manufacturing processes and prioritise the use of recycled materials whenever possible. By choosing Jag Poly's custom fabrications, clients can reduce their environmental footprint without compromising on quality or performance.

**Comprehensive Product Range:** Our extensive product range encompasses a wide variety of custom fabrications, including but not limited to:

- Polyethylene tanks and containers
- Custom-designed components for industrial machinery
- Protective barriers and enclosures
- Agricultural and horticultural equipment
- Environmental containment solutions

With a steadfast commitment to innovation, quality, and sustainability, Jag Poly is the premier choice for custom fabrications made from polyethylene. Whether you require a bespoke solution for a specific application or are seeking to enhance the performance of your existing products, we have the expertise and resources to meet your needs. Partner with Jag Poly and experience the difference that our custom fabrications can make for your business.

**Collaborative Partnership:** At Jag Poly, we view our clients as partners in success. We work closely with each client to understand their specific needs and objectives, providing personalised solutions that deliver tangible results. Our collaborative approach ensures that every project is executed seamlessly, from concept to completion.



# POLY FLOATS & PONTOONS

## Introducing JAG Poly Floats

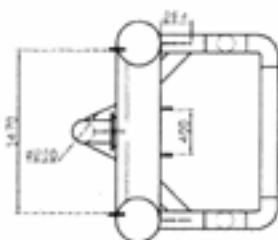
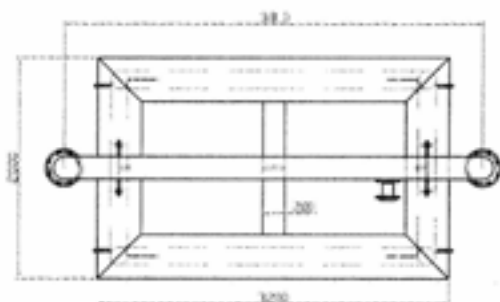
Experience unparalleled safety and versatility with JAG Poly Floats, featuring a revolutionary 'closed cell' foam core. Our innovative design, coupled with corrugated float modules, enables our floats to support a wide range of weights, from several kilograms to several tonnes. This flexibility opens up a myriad of design applications, ensuring suitability for diverse projects.

*Explore the array of versions available and discover the perfect solution for your needs!*

### Single Floats

#### Key features and benefits:

- Our Single Floats mark the inception of our pioneering journey.
- With a straightforward design, optional foam core, and equipped with lugs, these floats are meticulously crafted to fulfill their intended purpose.
- Access our comprehensive data sheet to delve into the specifications tailored to meet your specific needs.



Floatation @ 50% draft			
Code	Diam	Length	Capacity
PFS16015	160mm	1.5mtr	10kg
PFS20010	200mm	1.0mtr	11kg
PFS20015	200mm	1.5mtr	17kg
PFS20020	200mm	2.0mtr	22kg
PFS20025	P200mm	2.5mtr	28kg
PFS31510	315mm	1.0mtr	32kg
PFS31515	315mm	1.5mtr	48kg
PFS31520	315mm	2.0mtr	62kg
PFS31525	315mm	2.5mtr	77kg
PFS31530	315mm	3.0mtr	92kg
Other sizes available on request			

### Double Floats

#### Key features and benefits:

- Elevate your aquatic projects with our Double Floats, meticulously engineered with a central rigid platform for heightened stability.
- Experience unparalleled support and reliability as you embark on your ventures.



Floatation @ 50% draft			
Code	Diam	Length	Capacity
PFD20015	200mm	1.5mtr	35kg
PFD20025	200mm	2.5mtr	60kg
PFD20030	200mm	3.0mtr	80kg
PFD31515	315mm	1.5mtr	100kg
PFD31520	315mm	2.0mtr	135kg
PFD31525	315mm	2.5mtr	165kg
PFD31530	315mm	3.0mtr	200kg
PFD31535	315mm	3.5mtr	230kg
Other sizes available on request			





# POLY FLOATS & PONTOONS

## Pipeline floats

### Key features and benefits:

- Our Pipeline Floats offer a simple yet ingenious solution: instead of floating the pipe, we prevent it from sinking.
- Designed to support the pipe just beneath the surface, even when used alongside power cables, our floats ensure uninterrupted functionality and protection for your infrastructure.



## Float Modules

### Key features and benefits:

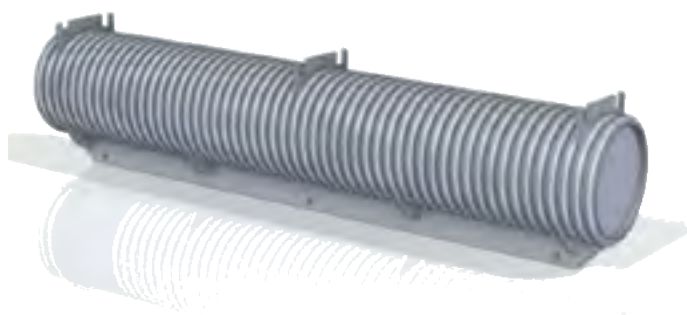
- Experience our latest innovation, Float Modules, offering an extensive selection of sizes and buoyancies to suit your specific needs.
- These modules can be seamlessly rafted together at customisable widths, providing exceptional stability for various applications. What's more, they can be easily disassembled for convenient transport, ensuring flexibility and efficiency in your projects.



## Single Float with Shroud Hanger Fin

### Key features and benefits:

- Cost-Effective Solution for Varied Applications
- Benefit from the remarkable rigidity and size range of our corrugated pipe floats with the Single Float featuring a Shroud Hanger Fin.
- Designed to optimise cost efficiency, these single units offer an impressive alternative to doubles, particularly in budget-sensitive projects. Ranging from 15kg to 1500kg, our floats ensure versatility and reliability across a wide spectrum of applications.



## Wheeled Floats

### Key features and benefits:

- For those meticulous about dam liners, our Wheeled Floats offer a paramount solution: roll, don't slide.
- Engineered with precision in mind, these floats ensure gentle and controlled movement, minimising the risk of damage to your valuable dam liners. Trust in our wheeled floats for seamless transportation without compromising on the integrity of your infrastructure.



## PROTECT DAM LINERS:

Utilise Poly Rails for Dragging Floats to Shore and Keep Intakes Clear of Mud

### Foot Valve Floats

#### Key features and benefits:

- Customization: Tailored design ensures suitability for diverse applications.
- Versatility: Adaptable to various water bodies and environments.
- Enhanced Efficiency: Optimises water intake by preventing debris and sediment infiltration.
- Durability: Constructed with high-quality materials for long-lasting performance.
- Easy Installation: Simplifies setup and integration into existing systems.
- Maintenance-Friendly: Facilitates access for inspection and upkeep as needed.



### Double Floats with Submersible Pump Shroud

#### Key features and benefits:

- Enhanced Stability: Increased buoyancy provides reliable support.
- Pump Protection: Shroud safeguards against damage from debris and impacts.
- Extended Lifespan: Reduces maintenance costs by prolonging pump life.
- Versatile: Suitable for various water bodies and environments.
- Easy Maintenance: Facilitates access for inspection and repairs.
- Efficient Performance: Ensures optimal pump operation.





# POLY FLOATS & PONTOONS

## Single Float & Submersible Pump Cooling Shroud

### Key features and benefits:

- **Efficient Cooling:** Shroud ensures pump performance.
- **Mud Foot Protection:** Prevents damage in muddy conditions.
- **Easy Installation:** Quick setup for various environments.
- **Versatile:** Suitable for ponds to industrial use.
- **Durable:** Withstands harsh conditions.
- **Maintenance-Friendly:** Easy access for upkeep.



## Surface Mounted Pump Pontoons

### Key features and benefits:

- **Efficient Pump Operation:** Ensures optimal performance of surface-mounted pumps.
- **Stability:** Provides a stable platform for pump installation on water surfaces.
- **Easy Installation:** Simplifies setup for quick deployment.
- **Versatility:** Suitable for various water bodies and applications.
- **Durable Construction:** Built to withstand outdoor conditions for long-term reliability.
- **Low Maintenance:** Requires minimal upkeep for continued operation.



## "Stand-Off" Floats

### Key features and benefits:

- **Enhanced Elevation:** Keeps equipment elevated above water surfaces.
- **Stability:** Provides a stable platform for equipment mounting.
- **Versatility:** Suitable for diverse applications and environments.
- **Easy Installation:** Simplifies setup for quick deployment.
- **Durability:** Built to withstand outdoor conditions for long-term use.
- **Efficient Design:** Supports efficient equipment operation with minimal maintenance.



## Floating Intake Strainer

### Key features and benefits:

- **Efficient Water Intake:** Filters debris from water sources without clogging.
- **Adaptability:** Suitable for various water bodies and applications.
- **Easy Deployment:** Simplifies installation and relocation as needed.
- **Durability:** Designed to withstand water conditions for long-lasting use.
- **Low Maintenance:** Requires minimal upkeep for continued effectiveness.
- **Versatility:** Compatible with a wide range of pumps and water systems.



Float modules designed for pump mounting can be disassembled for transport, reducing freight costs



Similar to our pipeline floats, this one serves the purpose of accommodating a foot valve, strainer, or an upturned bubble.



Wheels are installed to safeguard the pond liner. For those meticulous about dam liners, remember: Roll, don't slide.



Prepared for transportation.







# SUBMERSIBLE PUMP COOLING SHROUDS

**S**ubmersible Pump Cooling Shrouds, also referred to as pump shrouds, pump sleeves, flow inducer sleeves, or submersible pump flow sleeves, are essential for borehole-style electric submersible pump motors installed in open bodies of water such as dams or rivers.

These shrouds play a critical role in enhancing motor cooling, thereby extending the overall lifespan of the motor.

Poly pump shrouds are meticulously crafted to envelop both the pump and motor, ensuring that water flows closely past the motor for effective cooling.








By maintaining proper cooling conditions, these shrouds safeguard the pump motor against damage, guaranteeing optimal performance.

Each shroud is custom-designed to meet specific motor cooling requirements, adhering to manufacturers' recommendations for flow velocities, typically ranging from a minimum of 0.15 m/s to a maximum of 3.0 m/s.

To ensure optimal functionality, it's imperative to mount the shrouds clear of the well or dam floor. This prevents the accumulation of sludge or sand at the shroud entrance, which could compromise cooling performance.

Additionally, protective measures such as a 'MUD SLED' can be incorporated, along with strainers, even when suspended under a float, to further enhance durability and efficiency.

## Advantages:

-  **Enhanced Motor Lifespan:** By facilitating adequate cooling of the pump motor, shrouds contribute to prolonging its operational life.
-  **Protection Against Damage:** Shrouds shield the pump motor from potential damage caused by overheating, ensuring consistent and reliable performance over time.
-  **Optimal Cooling Efficiency:** These shrouds are designed to direct water flow closely past the motor, optimizing cooling efficiency and preventing overheating issues.
-  **Customized Design:** Each shroud is individually designed to match specific motor cooling specifications, ensuring precise fit and functionality.
-  **Versatile Applications:** Suitable for both horizontal and vertical installations, shrouds can be utilized in various settings where motor cooling may be insufficient, such as dams, rivers, or other open bodies of water.
-  **Compatibility with Protective Accessories:** Shrouds can be paired with additional protective accessories like 'MUD SLEDs' and strainers to further enhance durability and performance, even when suspended under a float.
-  **Cost-Effective Solution:** Investing in submersible pump cooling shrouds can potentially save costs associated with motor repairs or replacements due to overheating-related issues.



Standard submersible pump flow sleeves/shrouds are available with options for low flow or oversize screens, all equipped with motor centralisers. These units are suitable for vertical installation.

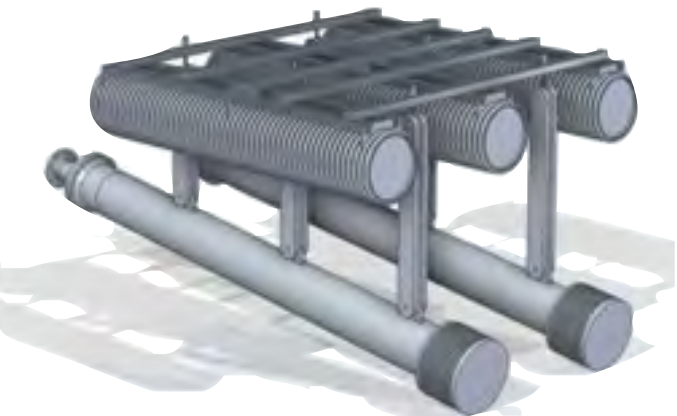


# PUMP SHROUDS

## Current Range By Flow Rate:

When inquiring about our submersible pump shrouds, we may request the following details to ensure the right fit for your needs:

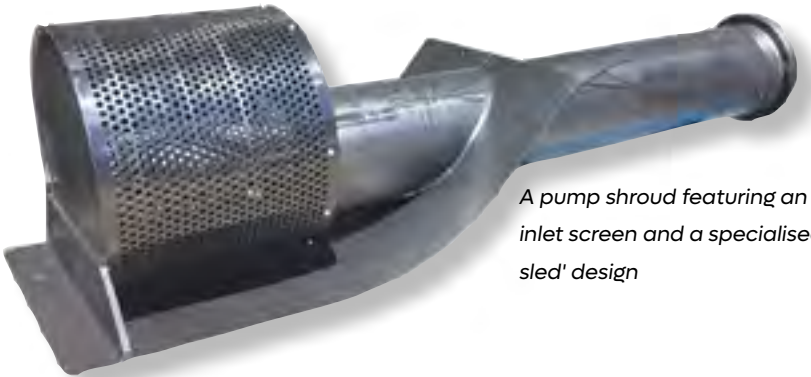
- Pump duty point
- Pump and motor dimensions, particularly motor size
- Net weight
- Installation orientation: horizontal or vertical
- Discharge pipe connection type: flange or spigot
- Requirement for a float
- Need for mud sled or bottom protection
- Minimum pump submergence
- Requirement for discharge pipe and cable flotation
- Installation environment (e.g., dam, river, irrigation channel, sump, pump well, etc.)



Pump shroud featuring a unique offset inlet screen and innovative 'mud sled'.



A straightforward float and pump shroud equipped with a mud sled for efficient performance



A pump shroud featuring an offset inlet screen and a specialised 'mud sled' design

Product Code	Flow rate (Litres per second)
SPS01	Up to 1
SPS02	2
SPS03	3
SPS04	4
SPS05	5
SPS06	6
SPS07	7
SPS08	8
SPS10	10
SPS12	12
SPS14	14

Product Code	Flow rate (Litres per second)
SPS16	16
SPS18	18
SPS20	20
SPS22	22
SPS24	24
SPS26	26
SPS28	28
SPS30	30
SPS35	35
SPS40	40
SPS45	45

Product Code	Flow rate (Litres per second)
SPS50	50
SPS55	55
SPS60	60
SPS70	70
SPS80	80
SPS90	90
SPS100	100
SPS110	110





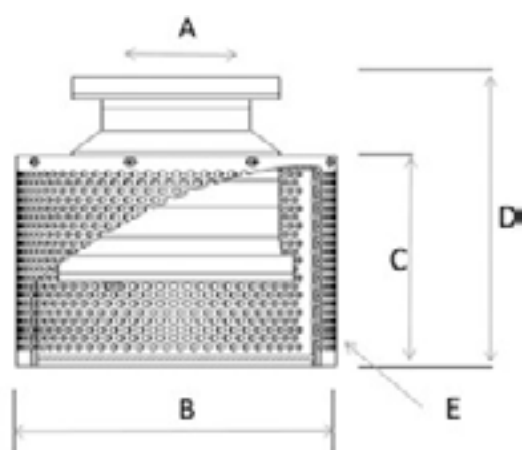
# POLY FOOT VALVES

## Features:

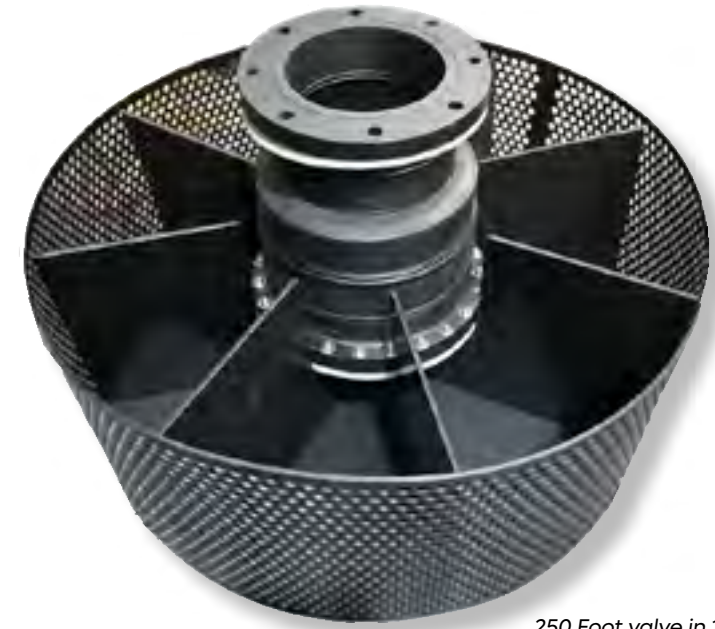
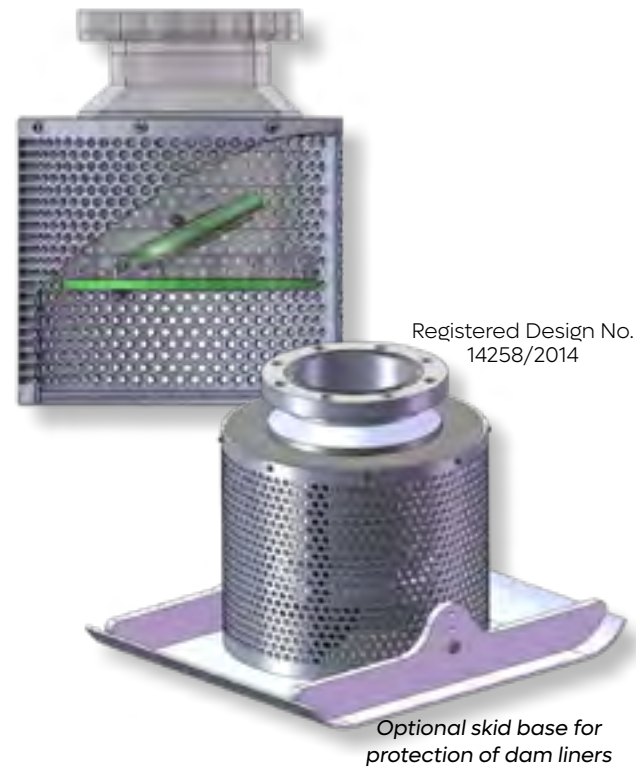
- Body constructed from durable HDPE material
- Electro-polished stainless steel hinge assembly for longevity
- Draw-down inlet design for efficient fluid intake
- Incorporates anti-vortex vanes to prevent turbulence
- Offers 10 times the inlet open screen area for enhanced filtration
- Available in sizes ranging from 100mm to 350mm
- Compatible with AS4087 / T/D flange and backing ring configurations

## Dimension Sheet:

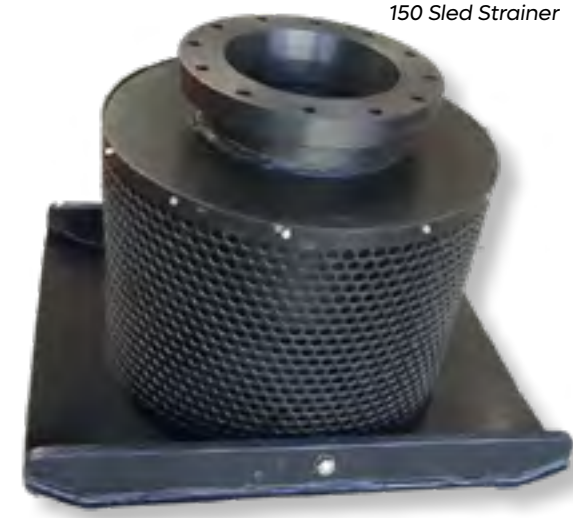
The innovative design of this new poly foot valve ensures a trouble-free service experience, boasting a large screen area to minimise trash buildup. With no welded metal parts to create corrosion points, it offers enhanced durability. The valve seat and flap are crafted from G10 high tensile strength resin material for reliable performance.



Nom. Size	Screen Dia.	Screen Length	Overall Length	Screen Hole Size
A	B	C	D	E
80	360	245	415	13
100	360	245	415	13
125	410	370	510	13
150	480	370	490	13
200	630	370	540	13
250	630	495	620	13 or 20
300	795	590	740	20
350	795	750	950	20
400	950	750	1050	20
450	950	750	1050	20



Explore our Foot Valve Range





# PRE-PUMP SUCTION STRAINERS

## Leaf and Lint Suction Strainers

### Features:

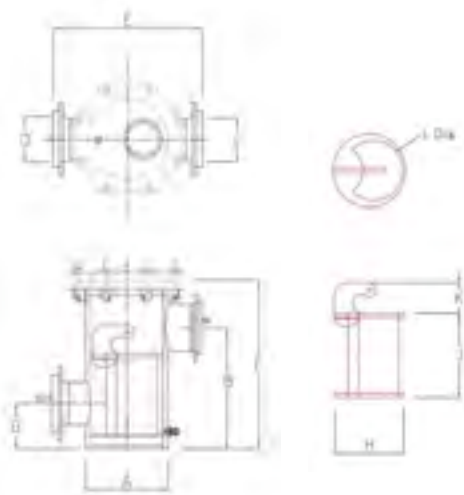
- Body constructed from tough HDPE material
- New and improved stainless steel punched screen strainer basket with durable poly ends and high flow channel
- Safe and easy-to-use toggle eye bolt lid retainers
- Custom inlet and outlet flanges sized to suit each installation
- Optional view port available for added convenience
- Available in sizes ranging from 15 to 150 litres per seconds.
- Features a new squat design for improved functionality  
**(Low Profile ONLY)**



Registered Design No.  
335479

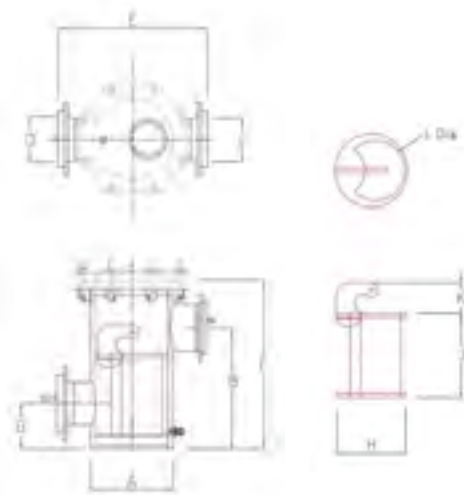


### Standard Profile Dimension Sheet:



Strainer	LLP15	LLP30	LLP50	LLP75	LLP100	LLP150
Flow range (liters per sec.)	up to 15	15 to 30	30 to 50	50 to 75	75 to 100	100 to 150
Body Dimensions (mm)						
A	280	315	400	450	500	630
B	390	650	675	705	730	780
C*	100	125	150	250	250	300
D*	80	100	125	200	250	300
E	550	570	750	760	900	1000
F	600	910	970	970	1020	1210
G	150	200	225	225	250	300
Note* - Flange dimensions and drilling pattern to order. Specify height of outlet to suit pump connection.						
Strainer Dimension (mm)						
H	245	278	351	395	440	555
J	270	490	490	490	490	490
K	122.5	139	175.5	197.5	220	277.5
L	205	235	300	345	395	510
316 1.5mm Stainless steel punched screen   4.76 x 6.35 holes = 51% open area						

### Low Profile Dimension Sheet:



Strainer	LLP15	LLP30	LLP50	LLP75	LLP100	LLP150
Flow range (liters per sec.)	up to 15	15 to 30	30 to 50	50 to 75	75 to 100	100 to 150
Body Dimensions (mm)						
A	280	315	400	450	500	630
B	390	500	525	550	580	670
C*	100	150	200	250	250	300
D*	80	100	125	200	250	300
E	550	570	750	760	900	1000
F	600	760	820	900	880	1050
G	150	200	225	225	250	300
Note* - Flange dimensions and drilling pattern to order. Specify height of outlet to suit pump connection.						
Strainer Dimension (mm)						
H	245	278	351	395	440	555
J	270	340	340	340	340	430
K	122.5	139	175.5	197.5	220	277.5
L	205	235	300	345	395	510
316 1.5mm Stainless steel punched screen   4.76 x 6.35 holes = 51% open area						



# FITTINGS

With a commitment to excellence, we offer a comprehensive range of fittings tailored to meet your specific needs.

From durable HDPE construction to innovative design features such as stainless steel punched screens and customisable flanges, our fittings ensure reliable performance and ease of use.

Whether you require fittings for irrigation, drainage, or industrial purposes, Jag Poly has you covered.

## SHORT SPIGOT

- Bends Short Radius
- Drilled Flanges
- PE BSP Threaded Adaptors
- Reducers Concentric BW
- Reducers Eccentric BW
- Shouldered Ends
- Stub Flanges BW
- Tees Equal BW
- Tees Reducing BW

## LONG SPIGOT

- Bends Long Spigot Multi Type
- Elbow Moulded Long Spigot
- End Caps Long Spigot
- Reducers Concentric Long Spigot
- Stub Flanges Long Spigot
- Tees Equal Long Spigot
- Tees Reducing Long Spigot

## OTHER FITTINGS:

Backing  
Rings

Butterfly Valve  
Spacers

Electrofusion  
Couplings

Fabricated  
Fittings

The joint venture between **JAG POLY** and **Acu-Tech Piping Systems** marks a significant milestone in the poly pipe and fittings industry.

As an integral part of the Acu-tech organisation, JAG POLY now offers an extensive range of poly pipe and fittings, along with comprehensive system solutions that include pumps, filtration, valves, and installation services.

This collaboration combines JAG POLY's expertise in quality fittings with Acu-Tech's reputation for excellence and innovation.

Together, they provide customers with unparalleled access to top-tier products and support, ensuring seamless integration and superior performance across a wide range of applications.





Contact us on **1300 36 7659** or **info@polyweldtech.com.au**.

**P**olyweld Tech Academy is your premier destination for mastering the art and science of polyethylene welding, more commonly known as poly welding.

As a trusted partner of Acu-Tech Piping Systems, we share a common goal: to empower professionals with the knowledge and skills necessary to excel in the rapidly evolving landscape of piping technology.

Our academy offers a comprehensive curriculum carefully crafted to empower participants with practical expertise in this specialised field. Our courses delve into essential techniques such as **Butt Welding, Electrofusion Welding, and Extrusion Techniques**, all tailored specifically for polyethylene materials.

With convenient locations in **Perth, Brisbane, Adelaide, Melbourne & Victoria**, as well as the flexibility to provide training at various locations across Australia, we ensure accessibility and thorough training experiences for our students. Additionally, we offer **Refresher/Biennial Welder Assessments** to help professionals stay updated with the latest advancements in poly welding practices.

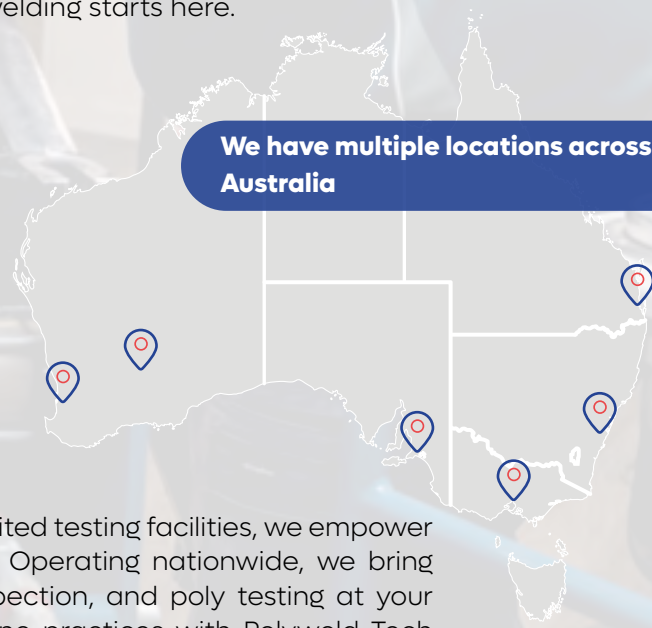
Our **NATA accredited testing facilities** are dedicated to quality assurance tests relevant to poly welding, ensuring the highest standards are upheld in every aspect of this specialised discipline.

Embark on a rewarding journey in the world of poly welding with Polyweld Tech Academy, where we combine technical expertise, cutting-edge technology, and hands-on training to equip you for success in this vital and dynamic industry. Your future in poly welding starts here.

**Polyweld Tech is a NATA accredited laboratory offering:**

- Specialising in tensile testing for butt welds and peel decohesion for electrofusion welds, coupled with an extensive range of QA/QC tests.
- Our advanced technology, combined with the expertise of our seasoned technicians, ensures precise and swift results.

**We have multiple locations across Australia**



With our **QA/QC** quality inspections and **NATA** accredited testing facilities, we empower your company to uphold superior joint techniques. Operating nationwide, we bring our services to your doorstep, offering training, inspection, and poly testing at your organisation's convenience. Elevate your polyethylene practices with Polyweld Tech Academy, where excellence meets expertise.

**ENGINEERED EXCELLENCE  
in Polyethylene**





## PE Pipe Systems Specialists



### Contact us

(07) 3260 2225

[ENQUIRIES@JAGPOLY.COM.AU](mailto:ENQUIRIES@JAGPOLY.COM.AU)

ABN: 68 626 756 223

[JAGPOLY.COM.AU](http://JAGPOLY.COM.AU)



### Contact us

1300 270 270

[SALES@ACU-TECH.COM.AU](mailto:SALES@ACU-TECH.COM.AU)

ABN: 68 626 756 223

[ACU-TECH.COM.AU](http://ACU-TECH.COM.AU)