





Service through Innovation and Quality

Welcome to Acu-Tech Piping Systems – Equipment Division

For more than 20 years, Acu-Tech has been supporting an industry that demands only the best. We've tested, supplied and serviced equipment from Butt Welders to Fusion Welders, Coil Trailers to Pipe Scrapers and are now recognised as a tier 1 supplier to major Pipeline Companies throughout Western Australia. Our comprehensive range of HDPE Equipment ensures your project can be delivered in time and on budget.



CONTENTS

Electrofusion Welders	2-5
Pipe Scrapers	6-9
Restraining & Alignment Clamps	9-13
Re-Rounding Tools	14-15
Top Loading Saddle Clamps	16
Saddle Cutter Drive Keys	16
Squeeze Off Tools	17-19
Cutting Tools	20
Butt Welders – Huerner	22-27
Butt Welders – Hy-Ram WeldMaster	27
Butt Welders – UFuse	28-29
Butt Welders – Ritmo EasyLife	30-31
Butt Welders – Ritmo Basic/Delta	32-33
Butt Welders – Ritmo High Pressure All Terrain	34-35
Butt Welders – Ritmo High Pressure Trailer Mounted	36-37
Butt Welders – Dixon	38-40
Data Loggers	41
Fast Fusion Welding Machines	42-43
Rollers	44-45
De-Beaders	46
Timers	47
Thermometers	47



HST



The HST 300 Print + 2.0 of the WhiteLine series of welding units is HÜRNER's move to take electrofusion welding into a new age, the age of a generation of welders with revolutionary, unique characteristics.

These units, which have been developed from scratch, build on the company's massive, decades-long experience. HÜRNER's standard hallmarks – light weight, compact dimensions, top-notch performance – have been added on-board geo-coordinate recording by GPS at the touch of a button.

The WhiteLine welders cover all areas of application in electrofusion welding of PE, PP, and PVDF pipes with heater coil fittings. There is no challenge for which you will not find a welder of the series able to take it on successfully.



Label Tag Printer

Writing down comments, cooling times and weld number with a marker pen is a thing of the past. Send a mini report to the printer for output as a label tag.



WeldTrace APP

Easy, straightforward recording, administration, and storage of project and welding data.

See page 4 for further details.

Whether it is jointing in the safety-sensitive area of gas networks, including accurate recording of geographic data, jointing components with very small diameters (e.g. geothermal or sanitary fitting applications) or very large diameters (e.g., wastewater applications) – the welders will always make a statement by their unyielding reliability that builds on more than 35 years of developing and manufacturing experience. The lighthouse HST 300 Print + 2.0 offers an extremely intuitive data transfer menu that enables the download of a finely tuned selection of welding and traceability reports, as an abstract or extended report in the PDF format, as a label printed by the optional label tag printer, or in the DataWork format sent to a PC.

HST 300 Print+ 2.0 Electrofusion Welder w/GPS

Electrofusion Control Box welds 20mm to 1.2m fittings. Fusamatic, Manual and Barcode operating modes. Pin adaptors included to weld 4mm and 4.7mm pin fittings. Welding monitoring system with data logging with internal memory of 10,000 joints. Transfer data via Bluetooth technology or via USB. Plus, GPS positioning of weld data.



Code	Description
201-1300	HST 300 Print+ 2.0 Electrofusion Welder w/GPS
201-1001	Aluminium Transport Box

HST 300 Print+ 2.0 Electrofusion Welder

Electrofusion Control Box welds 20mm to 1.2m fittings. Fusamatic, Manual and Barcode operating modes. Pin adaptors included to weld 4mm and 4.7mm pin fittings. Welding monitoring system with data logging with internal memory of 10,000 joints. Transfer data via Bluetooth technology or via USB.



Code	Description
201-1200	HST 300 Print+ 2.0 Electrofusion Welder
201-1001	Aluminium Transport Box

HST 300 Print 450 Electrofusion Welder

The HST 300 Print 450 is the most recent member of the 300 line. This new model version, too, makes a difference by its professional welding control characteristics and data traceability management, incl. PDF data transfer, for an operating range inclusive of fittings of up to 450 mm of diameter.



Code	Description
201-0450	HST 300 Print 450 Electrofusion Welder
201-1001	Aluminium Transport Box



WeldTrace APP

Quicker, Easier, Safer

Available for HÜRNER Electrofusion and Butt-welding Systems HÜRNER's Weld Trace APP allows smooth and direct download of all welding data via Bluetooth as a PDF report or in the HÜRNER DataWork format. This means easy and straightforward recording, management, and storage of the information on your projects and welded joints. Data is transferred and saved, using e-mail or another service, to your mobile terminal device, your corporate server or computer. As a result, your welding and project data are secure, accessible by you only and not by any unauthorized individual.

The download includes any required traceability data such as welder ID code, job number, and more, along with the GPS coordinates recorded for the joint.

The feature is available on the HST300 Series Electrofusion Welders and the CNC Eco and Weld Control Butt Welders. The app enables easy data download via Bluetooth, also an integrated QR code scanner can scan the label printed at the time of welding operation. Add to this the enhanced features of HÜRNER's database management application DataWork, and you have the capability at hand to track any welding project or operation years later and as easy as ABC.

HST 300 Smart Electrofusion Welder

Small, compact and light. With professional welding control characteristics and data traceability management, incl. PDF data transfer, and an operating range of fittings up to 160 mm in diameter makes this unit a great partner to the gas contractor and those involved in the smaller pipe lines.



Code	Description
201-0160	HST 300 Smart Electrofusion Welder

HST-S-160 Electrofusion Drainage Welder

The all-purpose HST-S-160 electrofusion welder offers easy, convenient and expert welding of PE fittings sized, 40 - 160 mm in wastewater and roof drainage applications.

With its very compact dimensions, a weight of approx. 1.4 kg, and its long power supply and welding cables, the welder offers an enormous working radius, turning it into a great helper that allows working those lines that are hard to access.



Code	Description
211-0160	HST-S-160 Electrofusion Drainage Welder

HST-S-315 Electrofusion Drainage Welder

This all-purpose HST-S-315 electrofusion welder offers easy and convenient joining of PE fittings sizes 40 to 315mm in wastewater and drainage applications. Comes in a sturdy plastic transport case with connecting adaptors, A00, A01, A02, A04 & A0P



Code	Description
211-0315	HST-S-315 Electrofusion Drainage Welder

PrepMaster MULTI Scrapers

Manually operated mechanical rotary scraping tool for removal of the outer surface of PE pipe. PrepMaster MULTI scrapers incorporate a hardened blade and give a controlled depth of cut. Available for pipe sizes between 63 and 710mm.

Code	Description
221-1315	PrepMaster MULTI Scraper 63-315mm
221-1400	PrepMaster MULTI Scraper 90-400mm
221-1500	PrepMaster MULTI Scraper 110-500mm
221-1710	PrepMaster MULTI Scraper 250-710mm
221-1001	PrepMaster MULTI Scraper Blade



PrepMaster MULTI 63-315mm



Easy adjustment for differing pipe walls

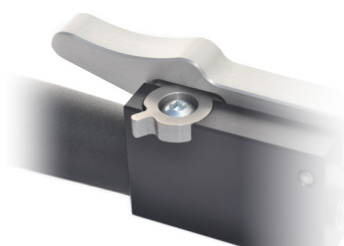


Robust bronze knobs for "fast traverse" & blade positioning

MONO Pipe Scrapers

Manually operated rotary scraping tool for the removal of the outer surface of PE pipes prior to electrofusion. Available in one tool per pipe/pipe-wall size, from 20mm to 63mm outside diameter.

Code	Description
221-2020	MONO Pipe Scraper - 20mm
221-2025	MONO Pipe Scraper - 25mm
221-2032	MONO Pipe Scraper - 32mm
221-2040	MONO Pipe Scraper - 40mm
221-2050	MONO Pipe Scraper - 50mm
221-2063	MONO Pipe Scraper - 63mm
221-2001	MONO Pipe Scraper Blade



"One Touch" Blade Lock Off Mechanism



Removable Mandrel. Alternative SRD's can be specified

Turbo Pipe Scrapers

These incredible pipe scrapers can work in confined spaces substantially reducing working times, especially during repair operations.

The rotating tool allows fast and precise scraping, without defects. Its blades also allow the perfect facing of the pipe ends which have been roughly cut.

Turbo Pipe Scrapers have to be used with a cordless driver.



Code	Description
221-4020	Turbo Pipe Scraper - 20mm
221-4025	Turbo Pipe Scraper - 25mm
221-4032	Turbo Pipe Scraper - 32mm
221-4040	Turbo Pipe Scraper - 40mm
221-4050	Turbo Pipe Scraper - 50mm
221-4063	Turbo Pipe Scraper - 63mm
221-4001	Turbo Pipe Scraper Blade
221-4002	Turbo Pipe Scraper Kit Bag
221-4003	Turbo Pipe Scraper Aluminum Case

Rotary Saddle Peeler

This innovative Rotary Peeler is designed for universal peeling at the pipe end for electrofusion couplings, tees and elbows and is ideal for electrofusion saddles.

Time saving and highest repeatable peeling quality at smallest rotation radius.



Code	Description
221-3040	Rotary Saddle Scraper - 40mm
221-3050	Rotary Saddle Scraper - 50mm
221-3063	Rotary Saddle Scraper - 63mm
221-3075	Rotary Saddle Scarper - 75mm
221-3090	Rotary Saddle Scraper - 90mm
221-3110	Rotary Saddle Scraper - 110mm
221-3125	Rotary Saddle Scraper - 125mm
221-3140	Rotary Saddle Scraper - 140mm
221-3160	Rotary Saddle Scraper - 160mm
221-3180	Rotary Saddle Scraper - 180mm
221-3200	Rotary Saddle Scraper - 200mm
221-3225	Rotary Saddle Scraper - 225mm
221-3250	Rotary Saddle Scraper - 250mm
221-3280	Rotary Saddle Scraper - 280mm
221-3315	Rotary Saddle Scraper - 315mm
221-3001	Rotary Saddle Scraper Blade

RTC Mechanical Scraper

The main construction features of the RTC makes it possible to maintain the thickness of the continuous chip constant, even if the pipe is misshaped. And to adjust the length of the surface to scrape according to the depth of the coupler.

The RTC 710 features an extendable arm to scrape the exact length of the coupler, which is an advantage when having to perform maintenance/repair jobs on the building site. The main chuck has four extendable arms that clamp directly onto the inside diameter of the pipe.



Code	Description
221-5160	RTC Mechanical Scraper, 50-160mm
221-5315	RTC Mechanical Scraper, 75-315mm
221-5710	RTC Mechanical Scraper, 355-710mm
221-5001	RTC/PS Scraper Blade

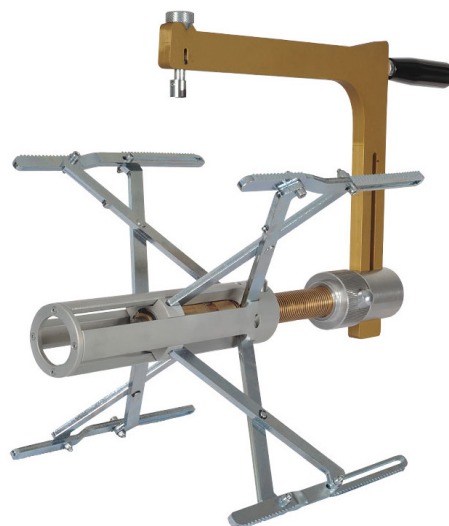
PS Rotary Pipe Scraper

The PS 180 and PS 400 are professional rotary scrapers, essential to prepare plastic pipes and fittings before electrofusion welding.

The tools have an adjustable chuck that cover all pipe sizes within the working range. The PS series guarantees a constant and regular removal of the shavings.

PS180 comes in transport bag.

PS400 comes in metal transport box.



Code	Description
221-6180	PS Rotary Pipe Scraper - 75-180mm
221-6400	PS Rotary Pipe Scraper - 160-400mm
221-5001	RTC/PS Scraper Blade



Hand Scrapers

Robust and easy to use hand tools for manual scraping of PE pipe prior to electrofusion.



Code	Description
221-8064	Hand Scraper - 64mm
221-8065	Replacement Blades - 64mm

UNI-CLAMP - Restraining & Alignment Clamps

A compact, powerful clamps with capabilities of being used for straight, reducing and elbow fittings.

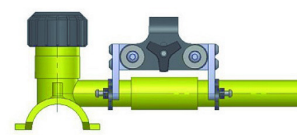
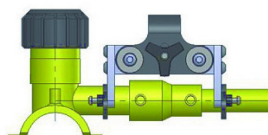
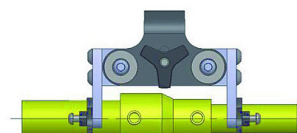
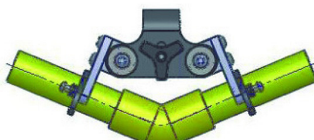
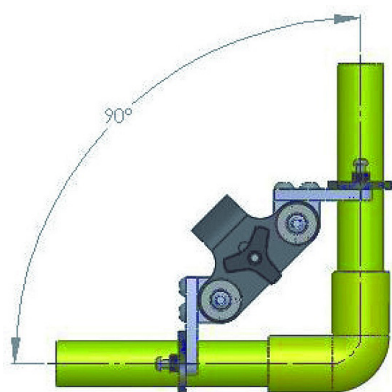
Code	Description
231-0010	Uni-Clamp 16-32mm
231-0020	Uni-Clamp 20-40mm
231-0030	Uni-Clamp 16-63mm



Uni-Clamp 16-32mm
Uni-Clamp 20-40mm



Uni-Clamp 16-63mm



EFRAC 180 Restraining & Alignment Clamps

Extremely rigid and powerful clamps available in two kit options with the option of additional accessories.

EFRAC 180 Standard Kit

The Standard Kit caters for straight and reducing fittings.

Comes in a tough carry bag and with liners to suit pipe sizes of 63, 90, 125 and 180mm.

Tee adaptor and additional size liners available.

Code	Description
231-0110	EFRAC 180 Standard Kit Complete with straight bar, standard liners and bag.
Liners	See below for addition liners



EFRAC 180 Standard Kit

EFRAC 180 Delux Kit

The Delux Kit caters for straight, reducing and elbow fittings. Comes in a tough carry bag and with liners to suit pipe sizes of 63, 90, 125 and 180mm.

Tee adaptor carry bag and additional liners available.

Code	Description
231-0120	EFRAC 180 Delux Kit Complete with knuckled bar, standard liners and bag.
Liners	See below for addition liners



EFRAC 180 Delux Kit

EFRAC 180 Tee Adaptor

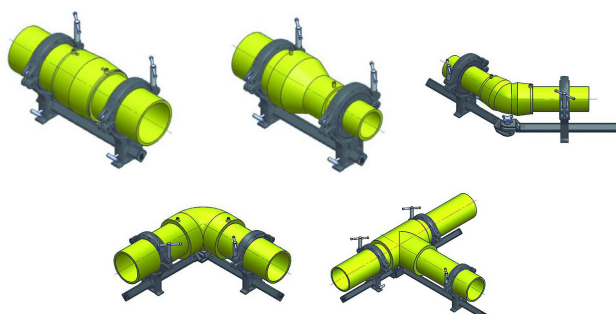
The Tee Adaptor will connect to either the Standard or Delux Kits. Includes liners to suit pipe sizes of 63, 90, 125 and 180mm.

Tee adaptor carry bag and additional liners available.

Code	Description
231-0130	EFRAC 180 Tee Adaptor Complete with standard liners.
231-0131	Carry Bag for EFRAC 180 Tee Adaptor
Liners	See below for addition liners



EFRAC 180 Delux Kit
with Tee Adaptor



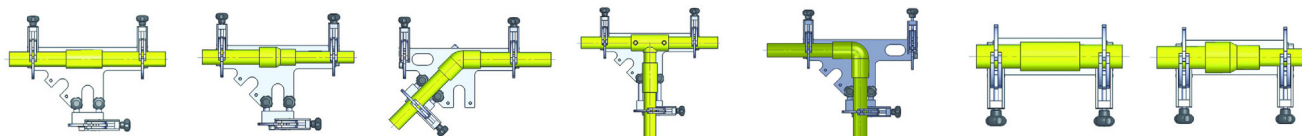
Code	Description
231-0151	EFRAC Liner - 63mm
231-0152	EFRAC Liner - 75mm
231-0153	EFRAC Liner - 90mm
231-0154	EFRAC Liner - 110mm
231-0155	EFRAC Liner - 125mm
231-0156	EFRAC Liner - 140mm
231-0157	EFRAC Liner - 160mm

EFAC 63 Alignment Clamp

This small, compact service pipe alignment clamp ensures quick and easy clamping of any size pipe within the range with no adjustment or loose pieces. The standard version suits straight and reducing fittings, whilst the 45/90° version also facilitates clamping of elbows.



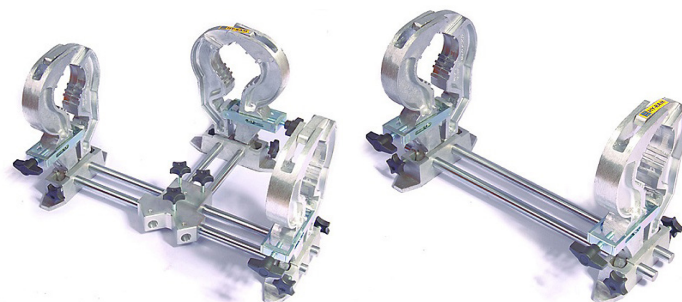
Code	Description
231-1010	EFAC 63mm Alignment Clamp
231-1020	EFAC 63mm 45/90° Alignment Clamp



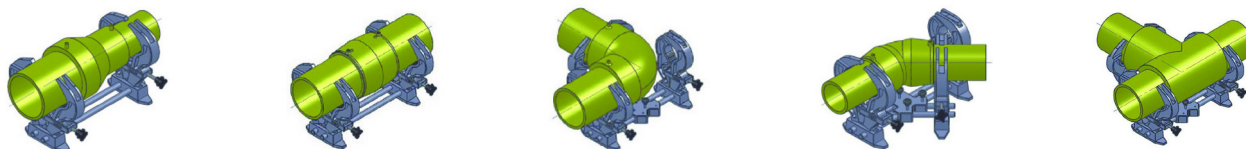
EFAC 180 Alignment Clamp

The "original" no-liner clamp. The gear in the base ensures quick and easy clamping of any size pipe within the range with no adjustment or loose pieces.

The standard version suits straight and reducing fittings whilst the 45/90° adaptor kit also facilitates clamping of elbows and tees.



Code	Description
231-1030	EFAC 180mm Alignment Clamp
231-1035	EFAC 180mm 45/90° Adaptor Kit

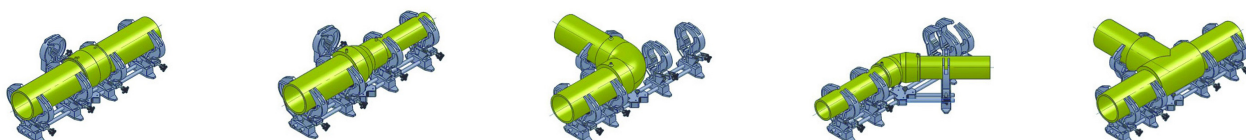


EFAC180 Double Alignment Clamp

Same as the EFAC180, except features a double clamp either side of the fitting to increase rigidity. It comes complete in a strong, steel carry case.

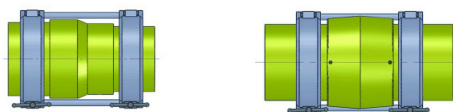
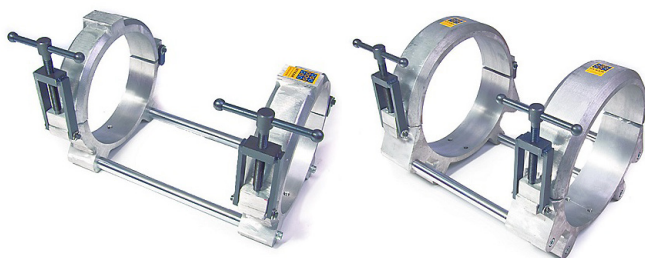


Code	Description
231-1040	EFAC180mm Double Alignment Clamp Kit
231-1045	EFAC 180mm 45/90° Double Adaptor Kit



Alignment & Restraining Clamps - 250 & 315

Strong, robust 'original' style Clamp with liners suitable for clamping straight and reducing fittings.



Code	Description
231-0230	EFRAC 250mm Alignment Clamp
231-0231	EFRAC Liner 250/180 (4 Required)
231-0250	EFRAC 315mm Alignment Clamp
231-0251	EFRAC Liner 315/250 (4 Required)

AlignMaster Positioning Clamps - 280, 315, 355, 400mm

For positioning and restraining pipe work throughout the electrofusion joining process.



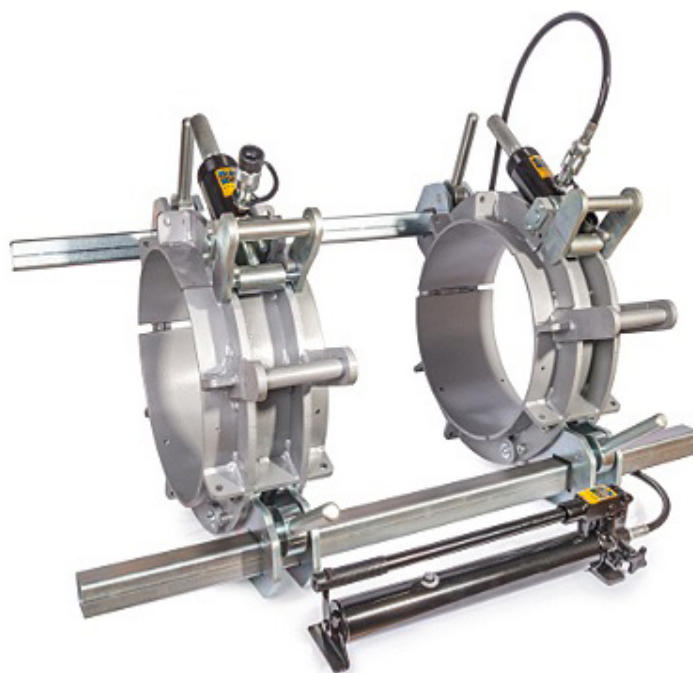
Code	Description
231-0310	Positioning Clamp - 315mm
231-0320	Positioning Clamp - 355mm
231-0330	Positioning Clamp - 400mm
231-0311	Reducing Liner - 315/280 (2Pcs)
231-0331	Reducing Liner - 400/355 (2Pcs)
231-0332	Reducing Liner - 400/315 (2Pcs)

AlignMaster Hydraulic Positioning Kits - 400, 500, 630, 710mm

For re-rounding, positioning and restraining large diameter pipes and couplers throughout the electrofusion joining process.

Comes with hydraulic pump.

Code	Description
231-0410	Hydraulic Positioning Kit - 400mm
231-0411	Reducing Liners - 400/355
231-0412	Reducing Liners - 400/315
231-0420	Hydraulic Positioning Kit - 500mm
231-0421	Reducing Liners - 500/450
231-0422	Reducing Liners - 500/400
231-0430	Hydraulic Positioning Kit - 630mm
231-0431	Reducing Liners - 630/560
231-0432	Reducing Liners - 630/500
231-0440	Hydraulic Positioning Kit - 710mm
231-0441	Reducing Liners - 710/500



Strap Clamp 200

Lightweight, fast set up alignment clamps for 40mm to 200mm pipe. Available as single clamps (1 clamp each side of fitting) or double clamps (2 clamps each side of fitting) The straight bar is used for couplers only. The angle maker bar can be used for straight couplers and for 22.5, 45 and 90 degree elbows.



Code	Description
231-2010	Strap Clamp 200, Single Clamps, Straight Bar
231-2015	Strap Clamp 200, Double Clamps, Straight Bar
231-2020	Strap Clamp 200, Single Clamps, Angle Maker Bar
231-2025	Strap Clamp 200, Double Clamps, Angle Maker Bar

Strap Clamp 500

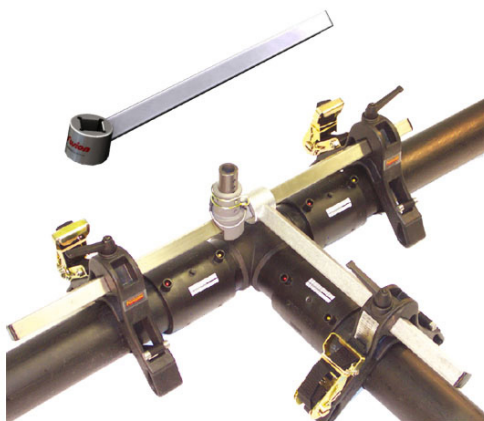
Fast set up alignment clamps for 160mm to 500mm pipe. Available as single clamps (1 clamp each side of fitting) or double clamps (2 clamps each side of fitting) The straight bar is used for couplers only. The angle maker bar can be used for straight couplers and for 22.5, 45 and 90 degree elbows.



Code	Description
231-2030	Strap Clamp 500, Single Clamps, Straight Bar
231-2035	Strap Clamp 500, Double Clamps, Straight Bar
231-2040	Strap Clamp 500, Single Clamps, Angle Maker Bar
231-2045	Strap Clamp 500, Double Clamps, Angle Maker Bar

T-Adaptor

The T-adaptor is an add-on tool enabling strap clamps to be used for clamping tees. To use the T-Adaptor a further V-Block clamp is required.



Code	Description
231-2050	Strap Clamp T-Adaptor Bar
231-2051	Strap Clamp 200, V-Block
231-2052	Strap Clamp 500, V-Block

Manual Re-Rounding Tools

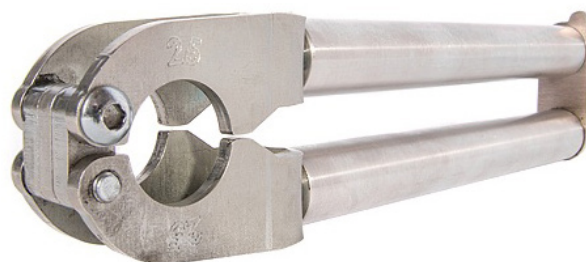
A complete range of Re-Rounding tools and clamps for PE pipe ranging from 16mm to 710mm diameter. The clamps are designed for use on the pipe prior to electrofusion where ovality is present either due to manufacturing or storage.

Multi Size Re-Rounding Tool



Code	Description
241-0016	Multi-Size Re-Rounding Tool, 16, 20, 25, 32mm

Nutcracker Re-Rounding Tools



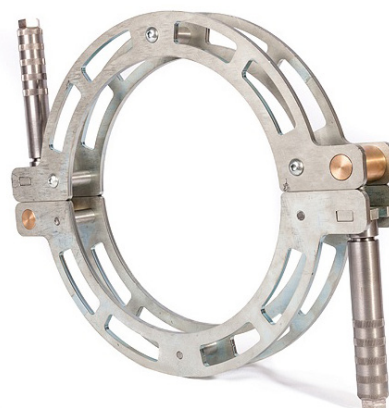
Code	Description
241-0020	Nutcracker Re-Rounding Tool - 20mm
241-0025	Nutcracker Re-Rounding Tool - 25mm
241-0032	Nutcracker Re-Rounding Tool - 32mm
241-0040	Nutcracker Re-Rounding Tool - 40mm
241-0050	Nutcracker Re-Rounding Tool - 50mm

Hinged Collar Re-Rounding Clamps



Code	Description
241-1063	Hinged Collar Re-Rounding Tool - 63mm
241-1075	Hinged Collar Re-Rounding Tool - 75mm
241-1090	Hinged Collar Re-Rounding Tool - 90mm
241-1110	Hinged Collar Re-Rounding Tool - 110mm
241-1125	Hinged Collar Re-Rounding Tool - 125mm
241-1140	Hinged Collar Re-Rounding Tool - 140mm
241-1160	Hinged Collar Re-Rounding Tool - 160mm
241-1180	Hinged Collar Re-Rounding Tool - 180mm

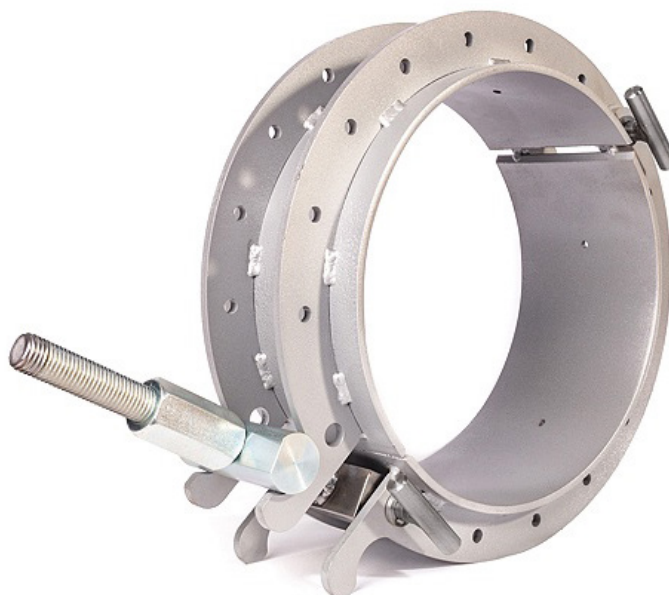
Split Collar Re-Rounding Clamps



Code	Description
241-1200	Split Collar Re-Rounding Clamp - 200mm
241-1225	Split Collar Re-Rounding Clamp - 225mm
241-1250	Split Collar Re-Rounding Clamp - 250mm

Segmented Collar Re-Rounding Tools

Used for re-rounding medium diameter PE pipe 280mm to 400mm prior to use with electrofusion couplers. The clamp comes with a ratchet for ease of operation. Operating size can be varied by addition of reducing shells.



Code	Description
241-1315	Re-Rounding Clamp - 315mm
241-1355	Re-Rounding Clamp - 355mm
241-1400	Re-Rounding Clamp - 400mm
231-0311	Reducing Liner - 315/280
231-0331	Reducing Liner - 400/355
231-0332	Reducing Liner - 400/315

Hydraulic Re-Rounding Clamps

Used for re-rounding large diameter PE pipe 315mm to 710mm prior to use with electrofusion couplers. The clamp comes with manual hydraulic pump. Operating size can be varied by addition of reducing shells.



Code	Description
241-2410	Hydraulic Re-Rounding Clamp - 400mm
231-0411	Reducing Liners - 400/355
231-0412	Reducing Liners - 400/315
241-2420	Hydraulic Re-Rounding Clamp - 500mm
231-0421	Reducing Liners - 500/450
231-0422	Reducing Liners - 500/400
241-2430	Hydraulic Re-Rounding Clamp - 630mm
231-0431	Reducing Liners - 630/560
231-0432	Reducing Liners - 630/500
241-2440	Hydraulic Re-Rounding Clamp - 710mm
231-0441	Reducing Liners - 710/630

Top Loading Clamps

The Pillar Top Loading Clamps locate in the 12mm hexagonal drive on the cutter of the tapping saddle. For saddles without an integral cutter, Saddle Adaptors are available.

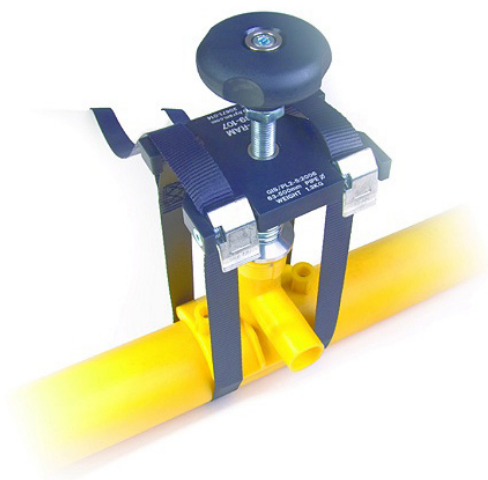
All Clamps are of robust design and incorporate a 'correct load' indicator and a vee base to ensure correct pipe location.

Code	Description
247-1010	Pillar Top Loading Clamp - Up to 250mm
247-1020	Pillar Top Loading Clamp - Up to 315mm
247-1030	Pillar Top Loading Clamp - Up to 400mm
247-1001	Branch Saddle Adaptor - 63, 90mm
247-1002	Branch Saddle Adaptor - 63, 90, 125mm



The Strap Top Loading Clamp locates in the 12mm Hexagonal drive on the cutter of the tapping saddle and is especially useful where trench space is tight. For all pipe sizes up to 500mm diameter.

Code	Description
247-1040	Strap Top Loading Clamp - Up to 500mm
247-1001	Branch Saddle Adaptor - 63, 90mm
247-1002	Branch Saddle Adaptor - 63, 90, 125mm



Cutter Drive Keys

Cutter drive keys for electrofusion self-tapping saddles.

Code	Description
247-2010	Cutter Drive Key - 12mm
247-2020	Cutter Drive Key - 17mm



Cutter Drive Key - 12mm

Squeeze Off Tools

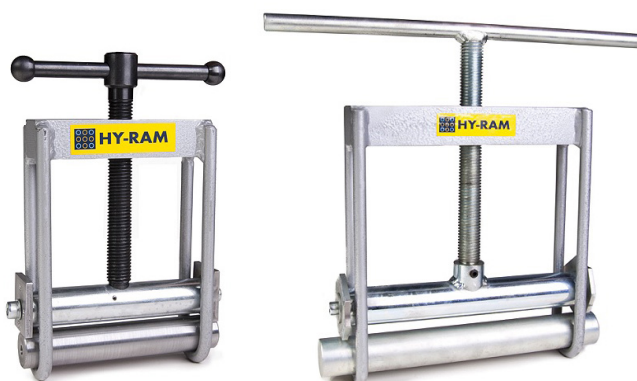
The Mini Squeeze Off Tool is used to limit the flow in PE pipe. Squeeze off is controlled by manually turning the handle in a clockwise direction.



Code	Description
251-1010	Mini Squeeze Off Tool - 16 to 32mm

Different diameters can be accommodated by using the appropriate "Pipe Stop" setting to ensure the optimum squeeze gap.

Code	Description
251-1030	Squeeze Off Tool, 20-63mm SDR11
251-1031	Pipe Stop Pair, 20-63mm SDR11
251-1032	Pipe Stop Pair, 20-63mm SDR17
251-1040	Squeeze Off Tool, 63-125mm SDR11 & SDR17
251-1041	Squeeze Off Tool, 63 to 125mm SDR21
251-1042	Pipe Stop Pair, 63-125mm SDR11/17
251-1043	Pipe Stop Pair, 63-125mm SDR21



Hydraulic Squeeze Off Tool - 180 & 200mm

The 180 and 200 MK3 versions squeeze off tools have CNC machined stops and an integral hydraulic jack enabling a maximum squeeze force of 15 tonnes. The units are fitted with safety check screws to prevent accidental release and also incorporate a jack spring return mechanism. 'Pipe stops' are used on the units for each diameter/SDR combination thus ensuring the optimum 'Squeeze gap'.

As standard our market leading 200 comes complete with stop sets to suit SDR11 and SDR17. One set will be fixed to the bottom beam ready for use and the other will be securely attached to the Squeeze Off frame crossbar. Additional stop sets can be purchased for the unit, please contact our sales team to discuss your requirements.

Code	Description
251-1050	Squeeze Off Tool - 63-180mm
251-1060	Squeeze Off Tool - 63-200mm



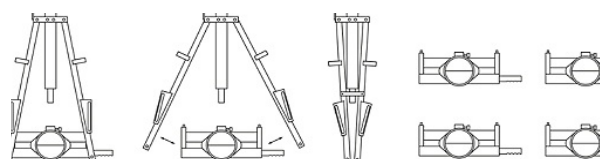
Hydraulic Squeeze Off Unit - 250mm

Gas pipe Squeeze Off unit with pioneering 'A' Frame design that is extremely lightweight yet very robust for 'in-trench' conditions, the frame folds and can be locked 'flat' for ease of carrying and transportation. The principle of operation is that the squeeze is carried out, the top and bottom beams are then mechanically locked together and then the 'A' frame is detached and used in conjunction with a second beam set. Using this concept all four squeeze points are accomplished using just one 'A' frame assembly and one power unit.

Available in two options as shown, with a pneumatic input / hydraulic output power unit or with a hydraulic hand-pump in lieu of the power unit and 'spring return' hydraulic cylinder.

The top squeeze beam is fitted with 'pipe stops' to suit the diameter and wall thickness (SDR) of the pipe to be squeezed.

Kit Includes: 1 x A Frame, 4 x Top Beam Assemblies, 4 x Bottom Beam Assemblies, 1 x Power Unit or (Handpump not shown)



Code	Description
251-1070	Manual Squeeze Off Unit - 250mm
251-1075	Hydraulic Squeeze Off Unit - 250mm

Hydraulic Squeeze Off Unit - 400mm

With this gas pipe Squeeze Off unit, the principle is the same as that of the 250mm unit. The squeeze is carried out, the top and bottom beams are then mechanically locked together, then the hydraulic cylinders are 'unclipped' and used in conjunction with a second beam set. Using this concept all four squeeze points are accomplished using just one pair of hydraulic cylinders. The bottom squeeze beam is fitted with 'pipe stops'.

These pipe stops form a positive 'stop' between the top and bottom beams and hence optimise the squeeze gap in order to ensure the pipe is not over-squeezed.

Kit Includes: 2 x Hydraulic Cylinders, 4 x Top Beam Assemblies, 4 x Bottom Beam Assemblies, 1 x Power Unit



Code	Description
251-1080	Hydraulic Squeeze Off Unit - 400mm

Hydraulic Squeeze Off Unit - 500mm

Gas pipe Squeeze Off unit featuring a detachable top beam with integrated hydraulic cylinders, an intermediate beam and a bottom beam.

As with other Hy-Ram designs, the squeeze off is carried out, the intermediate and bottom beams are mechanically locked together and then the top beam complete with the cylinders can be detached for use on the second, third and fourth squeeze points.



Code	Description
251-1090	Hydraulic Squeeze Off Unit - 500mm

Re-Rounding Tools

This range of Post Squeeze Re-rounding tools are diameter specific. They are designed to aid the rerounding process after a PE pipe has been squeezed off and the Squeeze Off unit has been removed. The standard range covers from 63 to 250mm however 'specials' can be manufactured to order (see 400mm unit).



Post Squeeze Re-Rounding Tools

Code	Description
241-3063	Post Squeeze-off Re-rounding Tool - 63mm
241-3075	Post Squeeze-off Re-rounding Tool - 75mm
241-3090	Post Squeeze-off Re-rounding Tool - 90mm
241-3110	Post Squeeze-off Re-rounding Tool - 110mm
241-3125	Post Squeeze-off Re-rounding Tool - 125mm
241-3140	Post Squeeze-off Re-rounding Tool - 140mm
241-3160	Post Squeeze-off Re-rounding Tool - 160mm
241-3180	Post Squeeze-off Re-rounding Tool - 180mm
241-3200	Post Squeeze-off Re-rounding Tool - 200mm
241-3225	Post Squeeze-off Re-rounding Tool - 225mm
241-3250	Post Squeeze-off Re-rounding Tool - 250mm



400mm Post Squeeze Re-Rounding Tools

Universal Post Squeeze Re-rounding Tools

This range of Post Squeeze Re-rounding tools can be supplied with liners to cover a range of pipe diameters.

Code	Description
241-3510	Uni Post Squeeze-Off Re-Rounding Tool, 63-75-90mm
241-3520	Uni Post Squeeze-Off Re-Rounding Tool, 110-125-140-160-180mm
241-3530	Uni Post Squeeze-Off Re-Rounding Tool, 180-200-225-250mm



Universal Post Squeeze Re-Rounding Tools

Secateur Pipe Cutters

Ratchet action quality secateurs for cutting plastic pipe from 16mm through to 75mm.

Code	Description
261-1020	Secateurs Pipe Cutters, 16-42mm
261-1040	Secateurs Pipe Cutters, 16-63mm
261-1060	Secateurs Pipe Cutters, 16-75mm



Rotary Pipe Cutters

These plastic pipe cutters facilitate fast precision cutting of all thick wall plastic pipe with spring loaded action for fast adjustment.

Code	Description
261-2010	Rotary Pipe Cutter 16-67mm
261-2011	Blade - RPC 16-67mm
261-2020	Rotary Pipe Cutter, 50-127mm
261-2021	Blade - RPC 50-127mm



Guillotine Pipe Cutters

These guillotine cutters feature a hinged lower crossbeam that swings open and allows the cutter to be positioned anywhere along the length of the pipe. These cutters achieve a straight square cut and the blades are replaceable and can be resharpened.

Code	Description
261-3020	Guillotine Cutter - 125mm
261-3021	Blade - Guillotine 125mm
261-3040	Guillotine Cutter - 225mm
261-3041	Blade - Guillotine 225mm
261-3060	Guillotine Cutter - 315mm
261-3061	Blade - Guillotine 315mm



Are you an Accredited Poly Welder?



Polyweld Tech Academy offers training in certified units of competency for:

- ☒ HDPE Butt Welding - High & Low Pressure (PMBWELD301)
- ☒ Electro Fusion Welding (PMBWELD302)
- ☒ Extrusion Welding (PMBWELD309)

Our welding courses are held either at our own training facility in Perth or anywhere in Australia that is convenient for your organisation. Courses include theoretical knowledge and hands on practice using a range of welding machines combined with the latest technology and industry developments to ensure you gain the most experience from your course.

At completion you will be confident in welding techniques and will be given a certificate, stamp and welder card from an expert in the industry.

Contact PolyWeld Tech today



-  08 9452 3000
-  info@polyweldtech.com.au
-  www.polyweldtech.com.au

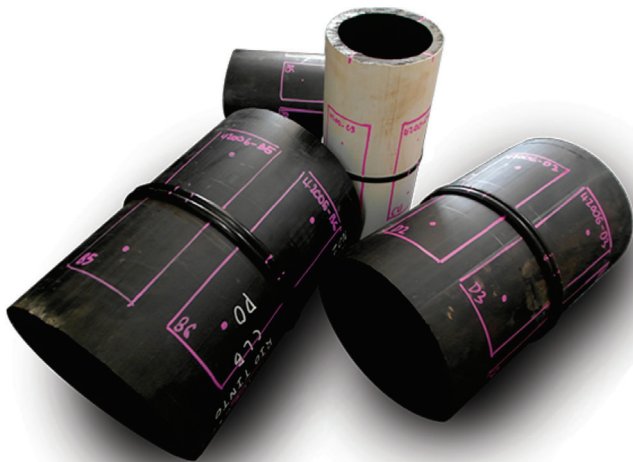


Do you need Weld Testing done?

Polyweld Tech Academy is equipped with NATA accredited testing facilities specialising in tensile testing of butt welds and peel decohesions for Electrofusion welds along with a complete range of QA/QC tests. With the latest technology and experienced technicians, we guarantee accurate and fast results .

PolyWeld Tech

-  08 9452 3000
-  info@polyweldtech.com.au



CNC ECO 2.0

Specification	160 mm	200 mm	250 mm	315 mm	355 mm	500 mm	630 mm	800 mm	1000 mm	1200 mm
Welding Range OD (mm)	40-160	63-200	63-250	90-315	90-355	200-500	315-630	500-800	630-1000	630-1200
Power Supply	230 V 50 Hz	230 V 50 Hz	230 V 50 Hz	230 V 50 Hz	230 V 50 Hz	400 V 50 Hz	400 V 50 Hz	400 V 50 Hz	400 V 50 Hz	400 V 50 Hz
Rated Power (kW)	3.94	4.68	4.94	5.44	5.45	12.54	13.00	19.54	23.6	24.6
Overall weight	80	91	125	179	216	372	581	1233	1397	1775
Reducer Inserts	40, 50, 63, 75, 90, 110, 125, 140	63, 75, 90, 110, 125, 140, 160, 180	63, 75, 90, 110, 125, 140, 160, 180, 200, 225	90, 110, 125, 140, 160, 180, 200, 225, 250, 280	90, 110, 125, 140, 160, 180, 200, 225, 250, 280, 315	200, 225, 250, 280, 315, 355, 400, 450	315, 355, 400, 450, 500, 560	500, 560, 630, 710	630, 710, 800, 900	630, 710, 800, 900, 1000
Stub Device (optional extra)	✓	✓	✓	✓	✓	✓	✓	✓	✓	✓
Automatic jumping heater plate (optional extra)	✓		✓	✓						

The HÜRNER CNC ECO 2.0 is a high-quality and durable, next-generation CN-controlled plastic pipe butt-welding machine that has been developed in compliance, with the machinery directive 2006/42/EC as amended. The design of the machine is such that with 12 basic machine chassis models, pipes from O.D. 40 to 1200 mm can be welded. The welding machines ship with a fully encased CNC hydraulic control box of ingress protection IP 54 managing pressures up to 220 bar. Both the anti-stick coated heating element and the facing tool are linked along with the machine chassis on the hydraulic control box. No additional power distribution is needed.

All HÜRNER CNC ECO machines of the next generation allow an optional upgrade with a hardware based input voltage monitor, inclusive of the associated voltage recording capabilities.

Heating element temperature and pressure control is implemented throughout the welding process as provided for by the applicable standard. All welding parameters for a high-quality and reproducible joint are monitored for the full duration of the process and saved to the internal memory with a capacity of 10,000 reports.

It is unique and a first in butt welding technology that user identification and access control does not rely on bar codes and scanner with these machines, as in the past, but makes the data available to the hydraulic and control box by the totally error-proof and extremely userfriendly RFID technology.

The tried and tested input devices, scanning pen and handheld scanner, are available as options. All HÜRNER CNC ECO machines feature a USB interface port for download of the welding data to a USB stick as a short abstract or an extended report in the PDF format, or for archiving them in the HÜRNER DataWork format.



Movement Pushbutton

The HÜRNER movement pushbutton fitted to the machine chassis allows moving the machine carriage when the welder stands next to the chassis. This enables convenient welding without constant back-and-forth between the hydraulic and control box and the machine chassis.



Front panel

The standard version of the machine ships with a next-generation, high-resolution, temperature range-extended character display. The novel GT keyboard enables convenient input of both required component parameters and traceability data.



Tag printer



Label tags

Immediate quality labeling of every welded joint is possible with the optional dedicated tag printer that delivers an abrasion-proof plastic sticker which can be used as a label on the fitting or joint.

160 | 200 | 250mm



Code	Description
101-0016	Huerner CNC Eco 2.0 Butt Welder - 160mm
101-0020	Huerner CNC Eco 2.0 Butt Welder - 200mm
101-0025	Huerner CNC Eco 2.0 Butt Welder - 250mm

315 | 355mm



Code	Description
101-0031	Huerner CNC Eco 2.0 Butt Welder - 315mm
101-0035	Huerner CNC Eco 2.0 Butt Welder - 355mm

500 | 630 | 800mm



Code	Description
101-0050	Huerner CNC Eco 2.0 Butt Welder - 500mm
101-0063	Huerner CNC Eco 2.0 Butt Welder - 630mm
101-0080	Huerner CNC Eco 2.0 Butt Welder - 800mm

1000 | 1200mm



Code	Description
101-0010	Huerner CNC Eco 2.0 Butt Welder - 1000mm
101-0012	Huerner CNC Eco 2.0 Butt Welder - 1200mm

WELD CONTROL

Specification	160 mm	200 mm	250 mm	315 mm	355 mm	500 mm	630 mm	800 mm	1000 mm	1200 mm	1600 mm
Welding range OD (mm)	40-160	63-200	63-250	90-315	90-355	200-500	315-630	500-800	630-1000	630-1200	900-1600
Power Supply	230 V/50 Hz	230 V/50 Hz	230 V/50 Hz	230 V/50 Hz	230 V/50 Hz	400 V/50 Hz	400 V/50 Hz	400 V/50 Hz	400 V/50 Hz	400 V/50 Hz	400 V/50 Hz
Rated Power (kW)	2.45	3.45	3.65	4.65	5.25	6.45	11.65	16.8	21.2	23.0	28.36
Overall weight without reducers (kg)	66	87	109	168	201	295	448	771	1135	1998	2450
Reducer Inserts	40, 50, 63, 75, 90, 110, 125, 140	63, 75, 90, 110, 125, 140, 160, 180	63, 75, 90, 110, 125, 140, 160, 180, 200, 225	90, 110, 125, 140, 160, 180, 200, 225, 250, 280	90, 110, 125, 140, 160, 180, 200, 225, 250, 280, 315	200, 225, 250, 280, 315, 355, 400, 450	315, 355, 400, 450, 500, 560	500, 560, 630, 710	630, 710, 800, 900	630, 710, 800, 900, 1000	900, 1000, 1200, 1400
Stub Device (optional extra)			✓	✓	✓	✓	✓	✓	✓	✓	✓
Automatic jumping heater plate (optional extra)	✓		✓	✓							

The workings of a WeldControl machine is unique as it enables an approach to welding no other system can offer. Either the operator makes use of the assistance of the interactively responding hydraulic control unit, or the manual mode is selected to make the joint "by hand". In the WeldControl mode the system walks the operator through the process after the pipe parameters were entered or confirmed. This includes monitoring the operator's inputs and recording the entire process.

WeldControl machines do not only provide presets, they facilitate the work, by reducing the pressure automatically when the automode is enabled.

Welding reports have all data required by ISO traceability. In the Manual mode the display screen works as a digital gauge. It displays the welding pressures and heating element temperatures and is a one-stop provider of all data.

Data can be sent as an abstract or extended report in PDF format, to a USB stick or a label tag printer. Downloading them in the DataWork format enables using HÜRNER's PC program DataWork for archiving and managing the welding data.

The machine ships with a totally encased WeldControl hydraulic and control unit with ingress protection IP 54 for pressures of up to 250 bar. Both the heating element and the facing tool are connected to the WeldControl hydraulics. No additional power distribution is needed. Component traceability data, pipe material, diameter, and wall thickness or SDR can be entered on a GT keypad with a highly user-friendly menu.

All pressures and times relevant to the jointing operation are computed and monitored by the WeldControl system and displayed on the screen for the welder's convenience.

The 4th clamp of the machine chassis can be easily removed by loosening 3 bolts, for welding operations at locations where positioning the machine is a challenge and for joints with tees or other fitting elements. This turns the machine into a fully functional "short" chassis with only three clamps. The machine chassis is set on a specifically developed support frame exhibiting a warp resistance that manages with ease, even the most extreme pipe parameters. Operators can be sure that the machine chassis does not tilt or twist even when very long lengths of pipe with very thick walls are processed.

Large, knurled turning knobs allows easy handling for the operator who opens or closes the clamps of the machines sized up to O.D. 315. No tools are needed for this.

The facing tool with integrated micro-safety switch is driven by a high-quality power drive engaged by a transmission chain. The precision heating element incorporates a very rugged anti-stick coating. Maximum protection of the stowed-away machine is provided (up to O.D. 315) by an optional high-quality transport box that has been specifically designed for the entire machine assembly, with drawer-style storage compartments for the reducer inserts.



Front panel
with GT keypad



Transport Box



Welding neck support



Unique WeldControl
jointing

160 | 200 | 250mm



315 | 355mm



Shown with optional
jumping heater plate

Code Description

101-1016	Huerner WeldControl Butt Welder - 160mm
101-1020	Huerner WeldControl Butt Welder - 200mm
101-1025	Huerner WeldControl Butt Welder - 250mm

Code Description

101-1031	Huerner WeldControl Butt Welder - 315mm
101-1035	Huerner WeldControl Butt Welder - 355mm

500 | 630 | 800mm



1000 | 1200 | 1600mm



Code Description

101-1050	Huerner WeldControl Butt Welder - 500mm
101-1063	Huerner WeldControl Butt Welder - 630mm
101-1080	Huerner WeldControl Butt Welder - 800mm

Code Description

101-1010	Huerner WeldControl Butt Welder - 1000mm
101-1012	Huerner WeldControl Butt Welder - 1200mm
101-1016	Huerner WeldControl Butt Welder - 1600mm



Specification	160 mm	200 mm	250 mm	315 mm	355 mm
Welding range OD (mm)	40-160	63-200	63-250	90-315	90-355
Power Supply	230 V 50/60 Hz	230 V 50/60 Hz	230 V 50/60 Hz	230 V 50/60 Hz	230 V 50/60 Hz
Rated Power (kW)	2.45	3.45	3.65	4.65	5.25
Overall weight without reducers (kg)	76	95	123	173	229
Reducer Inserts	40, 50, 63, 75, 90, 110, 125, 140	63, 75, 90, 110, 125, 140, 160, 180	63, 75, 90, 110, 125, 140, 160, 180, 200, 225	90, 110, 125, 140, 160, 180, 200, 225, 250, 280	90, 110, 125, 140, 160, 180, 200, 225, 250, 280, 315
Stub Device (optional extra)			✓	✓	✓
Automatic jumping heater plate (optional extra)	✓		✓	✓	

The series of butt-welding machines of the new SmartLine Hydraulic generation makes a statement by its superior manufacturing quality as well as by utmost suitability for the construction site.

The machine ships with a hydraulic unit which is compact and easy to operate. The controls and all electronic components are constructed with standard compliant ingress protection rated IP 54. The hydraulic unit also doubles as the central control panel of the machine, which the user performs all relevant settings and process steps. The front panel features the critical process controls, and also the digital temperature control for the heating element and the extra-large and easily readable pressure gauge.

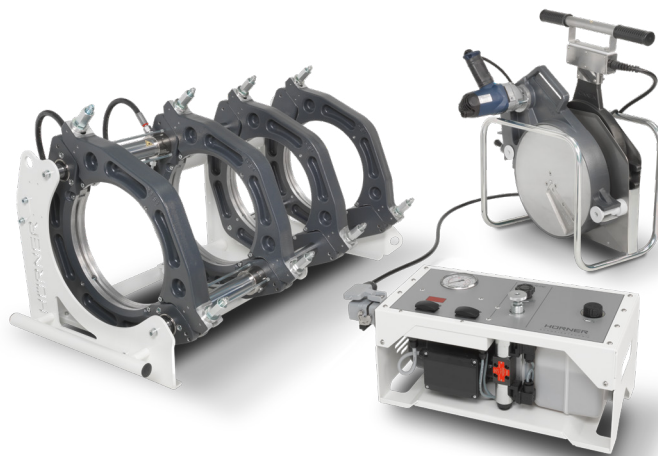
The heating element is connected directly to the hydraulic controller, therefore, no additional control box is needed.

The 4th clamp of the machine chassis can be easily removed by loosening 3 bolts, for welding operations at locations where positioning the machine is a challenge and for joints with tees or other fitting elements. This turns the machine into a fully functional "short" chassis with only three clamps.

The machine chassis is set on a specifically developed support frame exhibiting a warp resistance that manages with ease, even the most extreme pipe parameters.

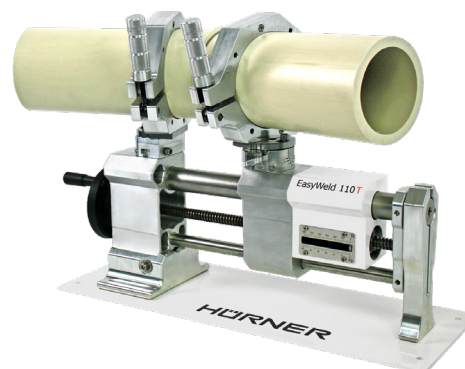
160 | 200 | 250 | 315 | 355mm

Code	Description
101-3016	Huerner SmartLine 160 Butt Welder
101-3020	Huerner SmartLine 200 Butt Welder
101-3025	Huerner SmartLine 250 Butt Welder
101-3031	Huerner SmartLine 315 Butt Welder
101-3035	Huerner SmartLine 355 Butt Welder



EASYWELD 110 T Butt Welder

The Huerner EasyWeld 110 T is your professional solution for butt-welding applications for pipes and fittings for all pressure ratios, from O.D. 20 to 110 mm (Tees O.D. 20 to 90 mm). This system enables a unique way of handling that is unavailable anywhere else. For welding operations, it offers all the advantages of a mobile butt-welding system that is user-friendly and mobile which is great for both worksites and workshops.



Code	Description
101-4110	EasyWeld 110 T Butt Welder

WELDMASTER Butt Fusion Machines

The WeldMaster range takes the Fully Automatic (CNC) machine to the next level in terms of control, quality, connectivity, usability and smart technological features. It brings together a range of machines packed with practical mechanical design and technologically advanced software features, all accessible from an intuitive new full-colour 7" TFT touchscreen interface. These machines offer the user simplistic operation whilst the functionality of the software automatically enables and records a host of smart features and information. The design of the Controller, Chassis, Trimmer and Hotplate all being separate 'modular' units, providing maximum flexibility and a machine best equipped for either in-trench or out of trench welding. Available in three sizes.

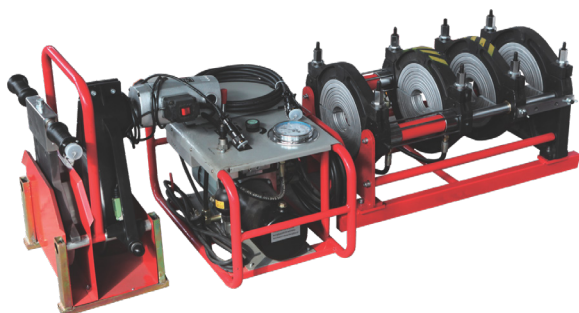


Code	Description
130-0250	WeldMaster 250, 63-250mm
130-0315	WeldMaster 315, 110-315mm
130-0400	WeldMaster 400, 160-400mm

UFUSE 160 Butt Welder

Complete with machine body, extractable heating plate, extractable milling cutter, electro-hydraulic gearcase, heating plate and milling cutter support, tool kit

Set of inserts OD 40, 50, 63, 75, 90, 110, 125 & 140mm, main clamp OD 160mm.

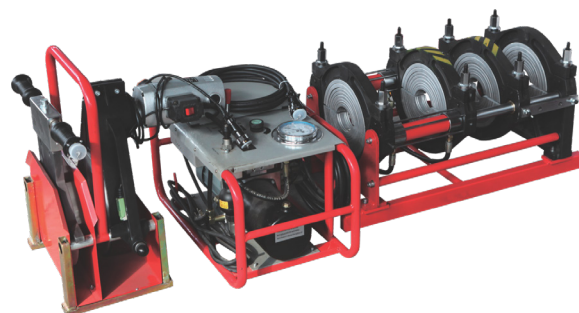


Code	Description
120-0016	UFUSE SMA Butt Fusion Welder - 160mm
120-0017	UFUSE Stub Holder Device - 160mm

UFUSE 250 Butt Welder

Complete with machine body, extractable heating plate, extractable milling cutter, electro-hydraulic gearcase, heating plate and milling cutter support, tool kit

Set of inserts OD 63, 75, 90, 110, 125, 140, 160, 180, 200 & 225mm, main clamp OD 250mm.



Code	Description
120-0025	UFUSE SMA Butt Fusion Welder - 250mm
120-0026	UFUSE Stub Holder Device - 250mm

UFUSE 355 Butt Welder

Complete with machine body, extractable heating plate, extractable milling cutter, electro-hydraulic gearcase, heating plate and milling cutter support, tool kit

Set of inserts OD 90, 110, 125, 140, 160, 180, 200, 225, 280, 315mm, main clamp OD 355mm

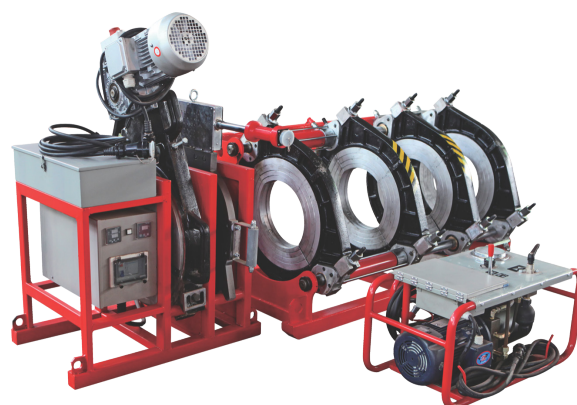


Code	Description
120-0035	UFUSE SMA Butt Fusion Welder - 355mm
120-0036	UFUSE Stub Holder Device - 355mm

UFUSE 450 Butt Welder

Complete with machine body, extractable heating plate, extractable milling cutter, electro-hydraulic gearcase, heating plate and milling cutter support, tool kit. Crane available.

Set of inserts OD 200, 225, 280, 315, 355, 400mm, main clamp OD 450mm

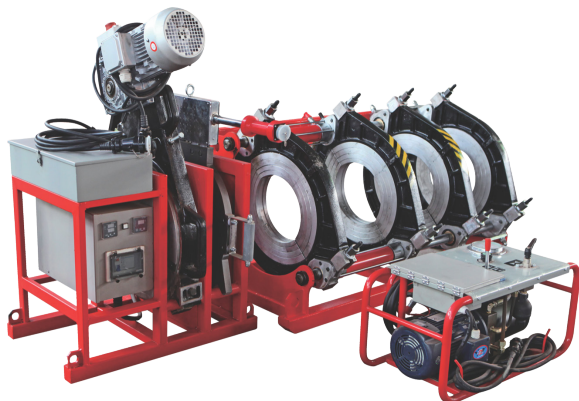


Code	Description
120-0045	UFUSE SMA Butt Fusion Welder - 450mm
120-0046	UFUSE Stub Holder Device - 450mm
120-0047	UFUSE 450 Crane

UFUSE 630 Butt Welder

Complete with machine body, extractable heating plate, extractable milling cutter, electro-hydraulic gearcase, heating plate and milling cutter support, tool kit. Crane available.

Set of inserts OD 315, 355, 400, 450, 500, 560mm, main clamp OD 630mm



Code	Description
120-0063	UFUSE SMA Butt Fusion Welder - 630mm
120-0064	UFUSE Stub Holder Device - 630mm
120-0065	UFUSE 630 Crane

UFUSE 800 Butt Welder

Complete with machine body, extractable heating plate, extractable milling cutter, electro-hydraulic gearcase, heating plate and milling cutter support, tool kit. Includes crane and hoist.

Set of inserts OD 450, 500, 560, 630 & 710mm, main clamp OD 800mm.



Code	Description
120-0080	UFUSE SMA Butt Fusion Welder - 800mm
120-0081	UFUSE Stub Holder Device - 800mm

UFUSE 1000 Butt Welder

Complete with machine body, extractable heating plate, extractable milling cutter, electro-hydraulic gearcase, heating plate and milling cutter support, tool kit. Includes crane and hoist.

Set of inserts OD 630, 710, 800 & 900mm, main clamp OD 1000mm.



Code	Description
120-0100	UFUSE SMA Butt Fusion Welder - 1000mm
120-0101	UFUSE Stub Holder Device - 1000mm

UFUSE 1200 Butt Welder

Complete with machine body, extractable heating plate, extractable milling cutter, electro-hydraulic gearcase, heating plate and milling cutter support, tool kit. Includes crane and hoist.

Set of inserts OD 630, 710, 800, 900, 1000 & 1100mm, main clamp OD 1200mm.



Code	Description
120-0120	UFUSE SMA Butt Fusion Welder - 1200mm
120-0121	UFUSE Stub Holder Device - 1200mm



EASY LIFE is an automated welding system able to monitor the cycle of work, the heating plate, the milling cutter and the machine body. The electrohydraulic gearcase, controlled by software, simplifies the work in the jobsite and avoids human mistakes.

Hardware and software have been developed to interact with each other sharing data during the entire workflow. Once you set the welding parameters up, the system guarantees the repetition of the welding cycle, avoiding errors. The operator only has to confirm the work phases on the gear case when asked to, just pushing a button. During the "welding phase", if pressure adjustments are needed, the electronic system automatically adjusts as necessary.

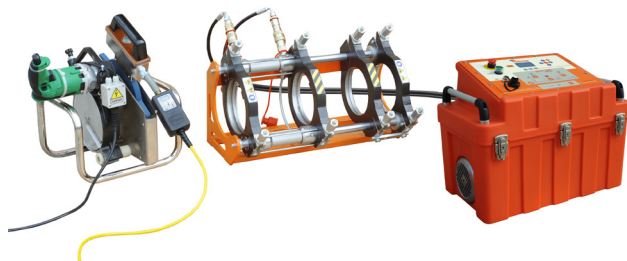


The EASYLIFE system incorporates data-logging that saves the data in an internal hard drive, capable to store up to 4000 welds. Possibility to preset 50 customized welding cycles. The data is available through PDF reports, downloadable to a USB drive.

EASYLIFE Butt Welder 160

Complete with machine body, extractable heating plate, extractable milling cutter, EasyLife hydraulic gearcase, heating plate and milling cutter support, tool kit

Set of inserts OD 40, 50, 63, 75, 90, 110, 125, 140mm, main clamp OD 160mm



Code	Description
110-2016	Ritmo EasyLife Butt Welding Machine - 160mm

EASYLIFE Butt Welder 250

Complete with machine body, extractable heating plate, extractable milling cutter, EasyLife hydraulic gearcase, heating plate and milling cutter support, tool kit. Crane available.

Set of inserts OD 75, 90, 110, 125, 140, 160, 180, 200, 225mm, main clamp OD 250mm

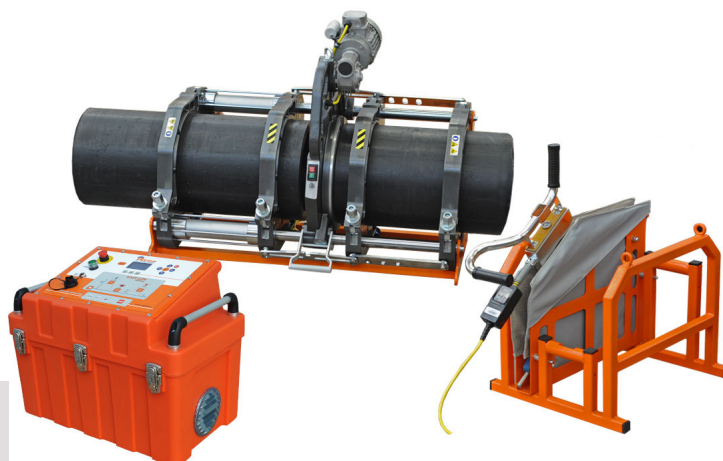


Code	Description
110-2025	Ritmo EasyLife Butt Welding Machine - 250mm
110-9025	Ritmo Stub Holder Device - 250mm

EASYLIFE Butt Welder 355

Complete with machine body, extractable heating plate, extractable milling cutter, EasyLife hydraulic gearcase, heating plate and milling cutter support, tool kit. Crane available.

Set of inserts OD 125, 140, 160, 180, 200, 225, 250, 280, 315mm, main clamp OD 355mm



Code	Description
110-2035	Ritmo EasyLife Butt Welding Machine - 355mm
110-9035	Ritmo Stub Holder Device - 355

EASYLIFE Butt Welder 500

Complete with machine body, extractable heating plate, extractable milling cutter, EasyLife hydraulic gearcase, heating plate and milling cutter support, tool kit. Crane available.

Set of inserts OD 200, 225, 250, 280, 315, 355, 400, 450mm, main clamp OD 500mm



Code	Description
110-2050	Ritmo EasyLife Butt Welding Machine - 500mm
110-9050	Ritmo Stub Holder Device - 500

EASYLIFE Butt Welder 630

Complete with machine body, extractable heating plate, extractable milling cutter, EasyLife hydraulic gearcase, heating plate and milling cutter support, tool kit. Crane available.

Set of inserts OD 280, 315, 355, 400, 450, 500, 560mm, main clamp OD 500mm



Code	Description
110-2063	Ritmo EasyLife Butt Welding Machine - 630mm
110-9063	Ritmo Stub Holder Device - 630



BASIC, the line of butt welders for pipes and joints in HDPE, PP, PB, PVDF with diameters ranging from 40mm to 355mm.

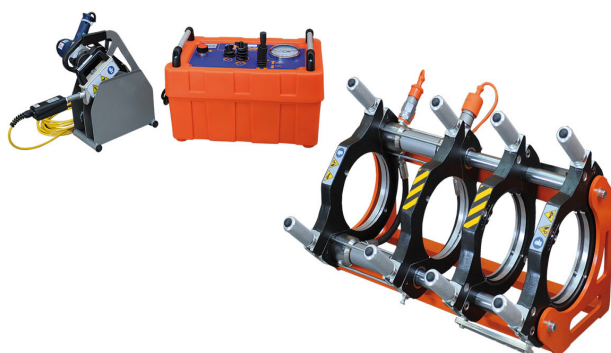
BASIC was designed by thirty years of experience in manufacturing, producing reliable and versatile machines, adapting for all environments, even the harshest such as deserts and mines. The BASIC line is distinguished by the excellent quality to price ratio, while maintaining reliability, precision and ease of use.



RITMO Basic Welder 160

Complete with machine body, extractable heating plate, extractable milling cutter, electrohydraulic gearcase, heating plate and milling cutter support, tool kit

Set of inserts OD 40, 50, 63, 75, 90, 110, 125, 140mm, main clamp OD 160mm



Code	Description
110-1016	Ritmo Basic Butt Welding Machine - 160mm

RITMO Basic Welder 250

Complete with machine body, extractable heating plate, extractable milling cutter, electrohydraulic gearcase, heating plate and milling cutter support, tool kit. Crane available.

Set of inserts OD 75, 90, 110, 125, 140, 160, 180, 200, 225mm, main clamp OD 250mm



Code	Description
110-1025	Ritmo Basic Butt Welding Machine - 250mm
110-9025	Ritmo Stub Holder Device - 250mm

RITMO Basic Butt Welder 355

Complete with machine body, extractable heating plate, extractable milling cutter, EasyLife hydraulic gearcase, heating plate and milling cutter support, tool kit. Crane available.

Set of inserts OD 125, 140, 160, 180, 200, 225, 250, 280, 315mm, main clamp OD 355mm

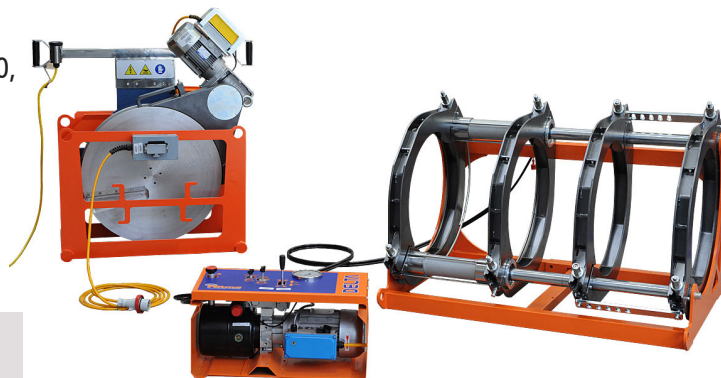


Code	Description
110-1035	Ritmo Basic Butt Welding Machine - 355mm
110-1036	Ritmo Stub Holder Device - 355mm

RITMO Basic Butt Welder 500

Complete with machine body, extractable heating plate, extractable milling cutter, EasyLife hydraulic gearcase, heating plate and milling cutter support, tool kit. Crane available.

Set of inserts OD 200, 225, 250, 280, 315, 355, 400, 450mm, main clamp OD 500mm



Code	Description
110-1050	Ritmo Delta Butt Welding Machine - 500mm
110-9050	Ritmo Stub Holder Device - 500mm

RITMO Basic Butt Welder 630

Complete with machine body, extractable heating plate, extractable milling cutter, EasyLife hydraulic gearcase, heating plate and milling cutter support, tool kit. Crane available.

Set of inserts OD 280, 315, 355, 400, 450, 500, 560mm, main clamp OD 630mm



Code	Description
110-1063	Ritmo Delta Butt Welding Machine - 630mm
110-9063	Ritmo Stub Holder Device - 630mm



The DELTA ALL TERRAIN range of fusion machines are powered by a low-vibration diesel engine, suitable for welding thermoplastic pipes for the transport of water, gas and other fluids under pressure. The machines can fuse pipes according to the ISO 21307 High Pressure standard (pressure range is three and a 1/2 times higher than the ISO Low Pressure). This greatly enhances productivity allowing up to 60% time saving.

These machines are fully self-contained, with diesel engine, generator and are self-drive. These are your go to machines to get your projects completed.



The EASY LIFE control panel (which is also removable from the machine body) allows the operator to program and pilot the welding duty cycle in an easy, fast and intuitive way. It also controls the temperature of the heating plate which is always visible on the display. It includes GPS and a data-logging system to store the welding data. The EASY LIFE system can store up to 4000 joint reports with the possibility to pre-set 20 customized welding cycles.

Delta 355 All Terrain

The Delta 355 All Terrain welds HDPE, PP pipes and fittings for the transportation of gas, water and other fluids under pressure from 125 mm to 355 mm. It is designed to work according to welding standard ISO 21307 High Pressure. Equipped with a powerful diesel engine and fitted with data logging with GPS traceability, makes this a truly versatile machine.



Code

Description

110-5035

Delta 355 All Terrain High Pressure Welder

Delta 500 All Terrain

The Delta 500 All Terrain is powered by a low-vibration diesel engine and equipped with front steering wheels and rear traction. The machine is suitable for welding pressure pipes (HDPE, PP) for the transportation of water, gas and other fluids up to Ø 500 mm.

Built according to the International standards for welding at ISO 21307 HIGH PRESSURE.

Onboard heater and shaver ensure operator safety. Built in data logging with GPS ensures all weld data is available when needed. The machine body and generator are easily removed for working in tight spaces. All available in a tidy package at a very reasonable price.



Code	Description
110-5050	Delta 500 All Terrain High Pressure Welder

Delta 630 All Terrain

The Delta 630 All Terrain is "The Pipe and Fittings FUSION Machine", designed to face the toughest working conditions. It stands out for being extremely easy to set up and work with. With a working range of 225 to 630mm it covers many project sizes.

Italian design, known for paying attention to detail, gives the Delta 630 All Terrain many technical innovations that are indeed practical. Full hydraulic-controlled clamps, heater and milling cutter. Sliding 3rd clamp for fittings welding and Automatic welding system "Easy Life"



Code	Description
110-5063	Delta 630 All Terrain High Pressure Welder

DELTA TRAILER

The DELTA TRAILER range of fusion machines are suitable for welding thermoplastic pipes for the transport of water, gas and other fluids under pressure. The machines can fuse pipes according to the ISO 21307 High Pressure standard (pressure range is three and 1/2 times higher than the ISO Low Pressure). This greatly enhances productivity allowing up to 60% time saving.

Standard machine features:

- A trailer mounted machine body that is easily removable for working in tight spaces. They come with a fast locking system to allow placement and removal of inserts in seconds
- An on-board electric facer that is equipped with a safety microswitch to prevent from accidental starts, a thermal circuit breaker to protect motor and features an ergonomic docking system and on/off switches.
- An EASY LIFE control panel which is also removable from the machine body to be able to check the welding phases outside from the ditches. It allows the operator to program and pilot all the welding duty cycle in an easy, fast and very intuitive way. It also controls the temperature of the heating plate, which is visible on the display. It includes GPS and a data-logging system to store the welding data; USB port for download welding report PDF, or a printer ESC-POS connection, or firmware upgrade. The EASY LIFE system can store up to 4000 joint reports. Possibility to pre-set 20 customized welding cycles.
- 4 wheeled chassis with 2 steering wheels and a safety brake

Delta 250 Trailer

4 wheeled butt fusion machine body, milling cutter, Easy-Life Control system, heating plate with support and 2 lifting rollers

Working Range: 75 to 250mm
 Power Supply: 230 V single phase
 Total absorbed power: 4200 W
 Dimensions: 1080 x 1380 x 1330mm
 Weight Standard Composition: 200 Kg



Code	Description
110-3025	Delta 250 Trailer High Pressure Welder

Delta 355 Trailer

4 wheeled butt fusion machine body, milling cutter & heating plate onboard, Easy-Life Control system & 2 rollers

Working Range: 125 to 355mm
 Power Supply: 230 V single phase
 Total absorbed power: 6000 W
 Dimensions: 2100 x 1600 x 1335mm
 Weight Standard Composition: 755 Kg



Code	Description
110-3035	Delta 355 Trailer High Pressure Welder

Delta 500 Trailer

4 wheeled butt fusion machine body, milling cutter & heating plate onboard, Easy-Life Control system & 2 rollers

Working Range: 200 to 500mm
 Power Supply: 415 V three phase
 Total absorbed power: 7250 W
 Dimensions: 3295 x 1383 x 1331mm
 Weight Standard Composition: 850 Kg



Code	Description
110-3050	Delta 500 Trailer High Pressure Welder

Delta 630 Trailer

4 wheeled butt fusion machine body, milling cutter & heating plate onboard, Easy-Life Control system & 2 rollers. Hydraulic lift on heating plate, milling cutter and clamps.

Working Range: 225 to 630mm
 Power Supply: 415 V three phase
 Total absorbed power: 9300 W
 Dimensions: 3140 x 1860 x 1475mm
 Weight Standard Composition: 1755 Kg



Code	Description
110-3063	Delta 630 Trailer High Pressure Welder

Delta 1000 Trailer

4 wheeled butt fusion machine body, milling cutter & heating plate onboard, Easy-Life Control system & 2 rollers. Hydraulic lift on heating plate, milling cutter and clamps.

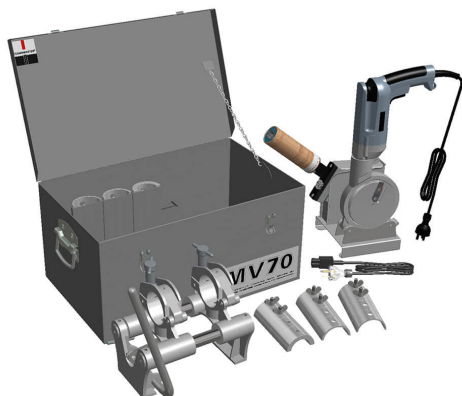
Working Range: 335 to 1000mm
 Power Supply: 415 V three phase
 Total absorbed power: 32000 W
 Dimensions: 4449 x 3700 x 3268mm
 Weight Standard Composition: 3770 Kg



Code	Description
110-3100	Delta 1000 Trailer High Pressure Welder

DIXON MV70 Butt Welder

Complete with main clamps for maximum 63mm OD pipe, electric heater plate, electric facer with floor stand and carry case. With the metric liner set the MV70 can weld 32, 40, 50 and 63mm while the Rural pipe liner set is for 1¼", 1½", and 2" pipe.



Code	Description
134-0050	Dixon MV70 Butt Welder
134-0051	MV70 Metric Liner Set
134-0052	MV70 Rural Pipe Liner Set

DIXON LF110 Butt Welder

Complete with main clamps for maximum 110mm pipe, electric heater plate, electric facer with floor stand and carry case. With the Reducing Liner Set the LF110 can weld 32, 40, 50, 63, 75, 90 and 110mm pipe.



Code	Description
134-0100	Dixon LF110 Butt Welder
134-0101	LF110 Liner Set

DIXON HF225 Butt Welder

Complete with main clamps on a wheeled base for maximum 225mm pipe, electric heater plate, electric facer with floor stand and carry case. The self-contained hydraulic hand pump simplifies operation. With the Reducing Liner Set the HF225 can weld 63, 75, 90, 110, 125, 140, 160, 180, 200 and 225mm pipe.



Code	Description
134-0150	Dixon HF225 Butt Welder
134-0151	Dixon 225 Liner Set
134-0152	Dixon 225 Stub End Device

DIXON EHF225 Butt Welder

Complete with main clamps on a wheeled base for maximum 225mm pipe, electric heater plate, electric facer with floor stand and carry case. The electric hydraulic power pack enables pre-setting of 3 independent pressures. With the Reducing Liner Set the EHF225 can weld 63, 75, 90, 110, 125, 140, 160, 180, 200 and 225mm pipe.

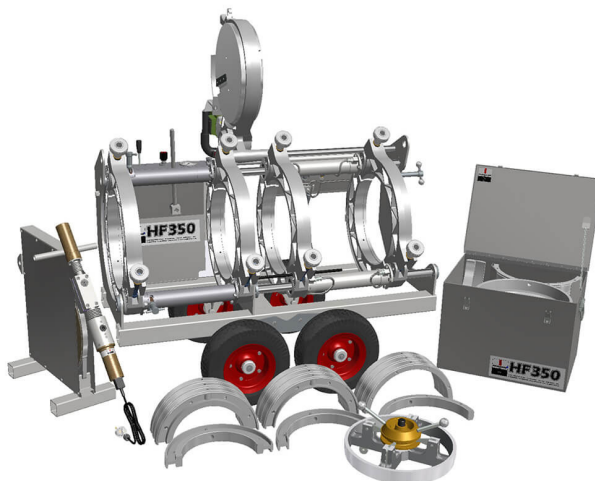


Code	Description
134-0200	Dixon HF225 Butt Welder
134-0151	Dixon 225 Liner Set
134-0152	Dixon 225 Stub End Device

DIXON HF350 Butt Welder

Complete with 355mm main clamps with facer mounted on a wheeled base, electric heater plate with floor stand. The HF350 utilises a hand operated hydraulic pump to apply weld pressure.

It has a unique pipe alignment mechanism that easily overcomes pipe mismatch, allowing fast set up times. With the Reducing Liner Set the HF350 can weld 110, 125, 140, 160, 180, 200, 225, 250, 280, 315 and 355mm pipe.

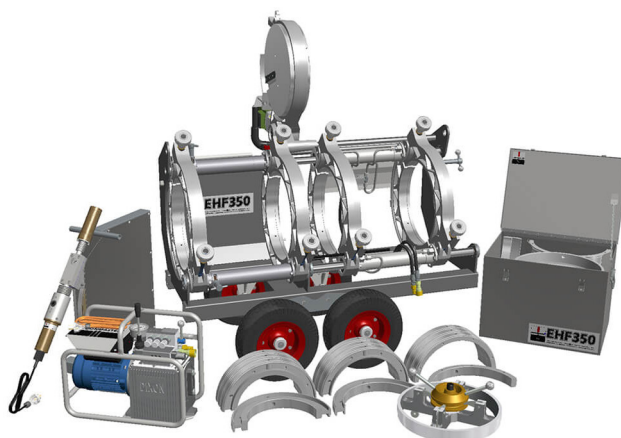


Code	Description
134-0250	Dixon HF350 Butt Welder
134-0251	Dixon 350 Liner Set
134-0252	Dixon 350 Stub End Device

DIXON EHF350 Butt Welder

Complete with 355mm main clamps with facer mounted on a wheeled base, electric heater plate with floor stand. The electric hydraulic power pack enables pre-setting of 3 independent pressures.

It has a unique pipe alignment mechanism that easily overcomes pipe mismatch, allowing fast set up times. With the Reducing Liner Set the HF350 can weld 110, 125, 140, 160, 180, 200, 225, 250, 280, 315 and 355mm pipe.



Code	Description
134-0300	Dixon EHF350 Butt Welder
134-0251	Dixon 350 Liner Set
134-0252	Dixon 350 Stub End Device

DIXON HF450 Butt Welder

Complete with 450mm main clamps with facer, heater and hydraulic power pack mounted on the main frame. It has a unique pipe alignment mechanism that easily overcomes pipe mismatch, allowing fast set up times.

With the Reducing Liner Set the HF450 can weld 200, 225, 250, 280, 315, 355, 400 and 450mm pipe.



Code	Description
134-0350	Dixon HF450 Butt Welder
134-0351	Dixon 450 Liner Set
134-0352	Dixon 450 Stub End Device
134-0353	Dixon 450 Wheeled Assembly

DIXON HF630 Butt Welder

Complete with 630mm main clamps with facer, heater and hydraulic power pack mounted on the main frame. It has a unique pipe alignment mechanism that easily overcomes pipe mismatch, allowing fast set up times.

With the Reducing Liner Set the HF630 can weld 355, 400, 450, 500, 560 and 630mm pipe.

Code	Description
134-0400	Dixon HF630 Butt Welder
134-0401	Dixon 630 Liner Set
134-0402	Dixon 630 Stub End Device
134-0403	Dixon 630 Wheeled Assembly



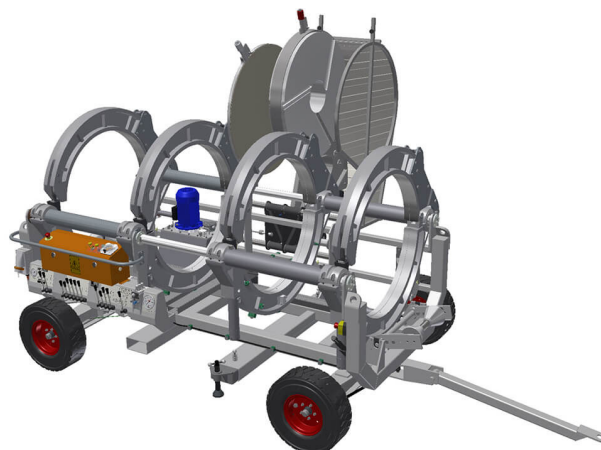
DIXON HF1000 Butt Welder

Complete with 1000mm main clamps with facer, heater and hydraulic power pack mounted on the mobile main frame.

It has a unique pipe alignment mechanism and hydraulic clamp locking that easily overcomes pipe mismatch and allows fast set up times.

With the Reducing Liner Set the HF1000 can weld 630, 710, 800, 900 and 1000mm pipe.

Code	Description
134-0450	Dixon HF1000 Butt Welder
134-0451	Dixon 1000 Liner Set

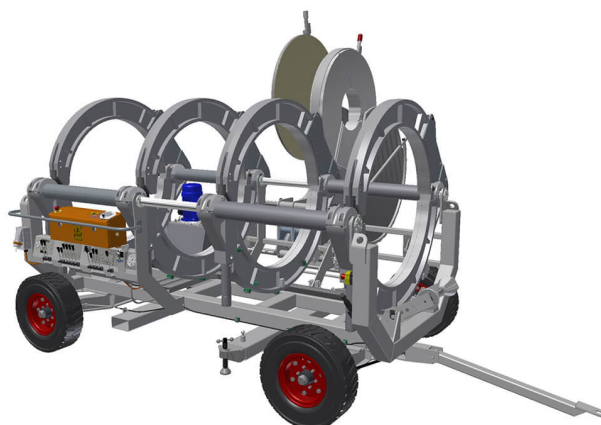


DIXON HF1200 Butt Welder

Complete with 1200mm main clamps with facer, heater and hydraulic power pack mounted on the mobile main frame.

It has a unique pipe alignment mechanism and hydraulic clamp locking that easily overcomes pipe mismatch and allows fast set up times

Code	Description
134-0500	Dixon HF1200 Butt Welder
134-0501	Dixon 1200 Liner Set



McElroy DataLogger 6

The DataLogger® 6 captures the most important data from your fusion jobsite to ensure that a joint was fused with the correct pressure and times according to supported standards. The ruggedized, Android-powered tablet records and documents key parameters of the fusion process including heat soak times, heating pressure, open/close times, fusion time, fusion pressure and cool time. A real-time graph gives the operator immediate visual feedback and information regarding the integrity of each fusion joint.

Joint records from the DataLogger 6 can be securely stored and analyzed online in the DataLogger Vault™ – allowing quick and easy sorting, tagging and sharing of joint records by machine, joint, operator, device or job.



Code	Description
172-0050	McElroy DataLogger 6

Ritmo – The Inspector

Data Logging that controls, records and generates a PDF report of the entire welding process. The Inspector is an “open system” that can be used with Ritmo and other machines. The large graphic display allows an easy reading of welding reports. THE INSPECTOR is installed in a hard case made of PP, with protection degree IP 67. It is sold with a bag that contains the data logging and the battery charger with international adapters.



Code	Description
172-150	The Inspector, Ritmo Data Logger

HURNER Data Logger SPG 2.0

HÜRNER's welding data logger SPG 2.0 is made for easy and safe welding process control and report generation. The control software comes with configurations for many third-party systems pre-installed. Therefore, the logger constitutes an upgrade for manually operated welding machines to achieve ISO-compliant recording, error handling, and welding process control. Easy installation is a standard feature!

Welding data are saved to an on-board memory that can hold up to 10,000 reports, which can be downloaded as a PDF abstract or extended report to a stick or to a label tag printer.



Code	Description
172-0250	Hurner Data Logger SPG 2.0



THE FASTEST & SAFEST WAY TO FUSE

Fast Fusion's MobileFusion Trac20 is an all-weather fusion system that incorporates weld bead cooling technology. By bringing fusion operations into the safety of a cab, fusion sites are safer and more productive - up to 70% more productive than conventional fusion processes. One of the key benefits of MobileFusion Trac (MFT) machines is FastLoad - a self-loading front boom that allows single operator loading from within the cabin area. That means no extra heavy equipment on the site to load or hold pipe in place for pipe fusions.

MobileFusion Trac 12/20/36 Pipe Fusion Machines

- User friendly design means only one operator in the cabin is required
- No extra personnel or heavy equipment
- Pipe fusion process inside the cabin means a controlled environment for speed and quality
- Machine design incorporates top of the line auxiliary components like Caterpillar engines and drive system
- Fully automatic system is equipped with a display screen with operator input keys for the Fast Fusion weld bead temperature control. No guess work
- Full exterior lighting package means no reason to stop progress as you can continue to work into the night.

FastLoad Patented System

- Pipes are placed in a line, end to end. No need to double handle each stick of pipe
- The MFT machine drives to the pipe, loads the pipe onto the roller assembly, eliminating the need for ground staff
- Fast Fusion trains the operator
- Gates at the entry and exit points of the pipe are in direct alignment with the loading system



Operator Cabin is Designed for Production

- 360° windows and front and rear video monitoring gives the operator confidence in the work being performed and this generates high productivity
- Cab area has heating and air conditioning to provide the right work environment. Every operator should have comfort to get the job done
- Environmentally controlled so that there are no issues with dust, heat, wind, rain or snow for completing the fusion welding task. This is what Fast Fusion is all about
- No need for tents or containers to manage the environment of fusing pipe. No wasted time moving extra equipment around the job site to protect the fusion process
- Fast Fusion technology increases speed of fusion welding by 70% which means more welds per hour than any system in the world



Weld Cooling Times are the Fastest in the Industry

- Up to 70% faster than other methods with quality documentation = more sticks per hour.
- Fast Fusion patented technology causes the weld cooling to take place quickly with no risk to quality.
- The Fast Fusion proprietary software defines the time for cooling each pipe.
- Wait times are reduced up to five times less than conventional fusion machine.

Fast Fusion's MobileFusion Trac technology will dramatically increase the production capacity and number of fusion welds produced per hour over any other machine offered in the industry.

FAST-FUSION MFT-12

The MFT-12 fuses pipe from 110 to 315mm. It is an all-weather fusion system that incorporates the Fast-Fusion weld bead cooling technology. By bringing fusion operations into the safety of a cab, fusion sites are safer and more productive - up to 70% more productive than conventional fusion processes.

One of the key benefits of MobileFusion Trac (MFT) machines is FastLoad - a self-loading front boom that allows single operator loading from within the cabin area. That means no extra heavy equipment on the site to load or hold pipe in place for pipe fusions.



Code	Description
132-0315	Fast-Fusion MFT-12

FAST-FUSION MFT-20

The MFT-20 fuses pipe from 10 to 500mm. It is an all-weather fusion system that incorporates the Fast-Fusion weld bead cooling technology. By bringing fusion operations into the safety of a cab, fusion sites are safer and more productive - up to 70% more productive than conventional fusion processes.

One of the key benefits of MobileFusion Trac (MFT) machines is FastLoad - a self-loading front boom that allows single operator loading from within the cabin area. That means no extra heavy equipment on the site to load or hold pipe in place for pipe fusions.



Code	Description
132-0500	Fast-Fusion MFT-20

FAST-FUSION MFT-36

The MFT-36 fuses pipe from 500 to 900mm. It is an all-weather fusion system that incorporates the Fast-Fusion weld bead cooling technology. By bringing fusion operations into the safety of a cab, fusion sites are safer and more productive - up to 70% more productive than conventional fusion processes.

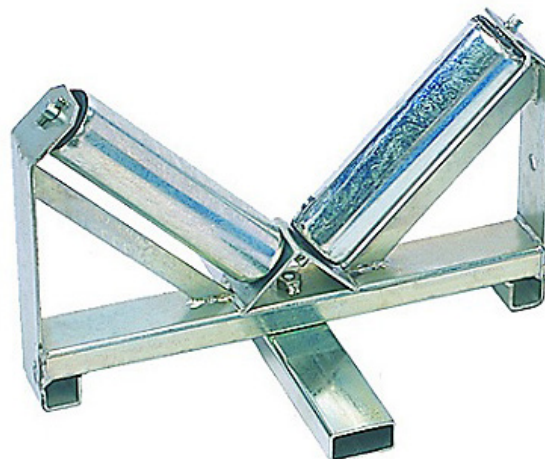
One of the key benefits of MobileFusion Trac (MFT) machines is FastLoad - a self-loading front boom that allows single operator loading from within the cabin area. That means no extra heavy equipment on the site to load or hold pipe in place for pipe fusions.



Code	Description
132-0900	Fast-Fusion MFT-36

Pipe Roller – 315mm

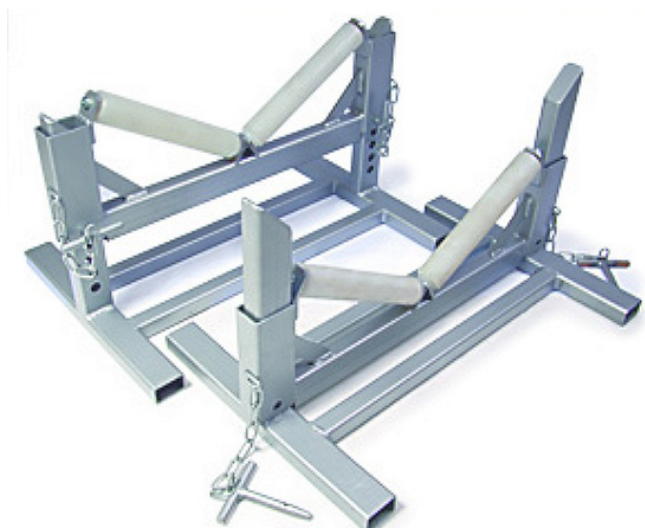
Pipe roller suitable for pipe up to 315mm. Bottom arm swivels 90 degrees to minimise space for storage and transport.



Code	Description
171-0010	Pipe Roller <315mm

Pipe Roller – 63 to 400mm

Height adjustable pipe roller, suitable for pipe 63mm through to 400mm.



Code	Description
171-0020	Pipe Roller 63-400mm

Pipe Roller – 400 to 630mm

Height adjustable pipe roller, suitable for pipe 400mm through to 630mm.



Code	Description
171-0030	Pipe Roller 400-630mm



HS ROLLERS

These rollers are essential for supporting the pipes while they are being welded with the butt fusion machines. The rollers minimise pipe friction and drag force no matter what the construction site condition. They are designed to complement the Ritmo All-Terrain and Trailer Line machines.

HS Roller 250

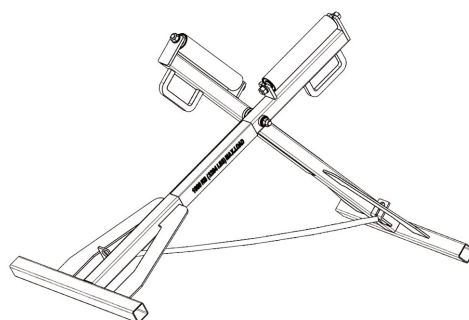
Working Range Max: Ø250mm
Dimensions: 1150W x 500D x 756mmH
Weight: 26 Kg
Weight Capacity: 500 Kg



Code	Description
171-1025	High Stand Roller – 250mm

HS Roller 355

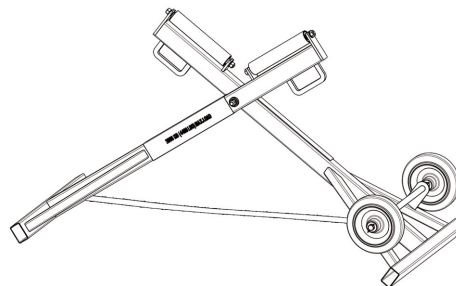
Working Range Max: Ø355mm
Dimensions: 1421W x 600D x 818mmH
Weight: 33 Kg
Weight Capacity: 1000 Kg



Code	Description
171-1035	High Stand Roller – 355mm

HS Roller 630

Working Range Max: Ø630mm
Dimensions: 1766W x 800D x 982mmH
Weight: 55 Kg
Weight Capacity: 2000 Kg



Code	Description
171-1063	High Stand Roller – 630mm

HS Roller 1000

Working Range Max: Ø1000mm
Weight: 140 Kg
Weight Capacity: 3000 Kg



Code	Description
171-1100	High Stand Roller – 1000mm

External Pipe Debeader

Designed to remove the external bead from a complete butt fusion welded joint.

The tool knocks onto the pipe bead, then alignment blocks slide against the pipe surface to guide it around the pipe. The blade cuts under the bead and the handle helps pull the tool around the pipe, cutting the bead away.



Code	Description
170-2012	External Pipe Debeader – 63 to 125mm
170-2040	External Pipe Debeader – 90 to 400mm
170-2120	External Pipe Debeader – 400 to 1200mm

Internal Pipe Debeader – 90 to 630mm

Designed to remove the internal bead from a complete butt fusion welded joint.



Code	Description
170-1011	Internal Debeader Head – 90 to 110mm
170-1016	Internal Debeader Head – 125 to 160mm
170-1020	Internal Debeader Head – 160 to 200mm
170-1031	Internal Debeader Head – 225 to 315mm
170-1050	Internal Debeader Head – 355 to 500mm
170-1063	Internal Debeader Head – 560 to 630mm
170-1001	Alloy Rod Set 13m, in Carry Bag

Acu-Tech Disposable Poly Welding Wipes

Poly Welding Isopropyl Wipes for HDPE pipe removes contamination which could potentially cause fusion joint failure. Measuring 420 mm by 143 mm, the heavy-duty disposable wipes assist installers to save time in electrofusion and butt fusion weld jointing. Acu-Tech's convenient and safe Polyweld wipes are 90% isopropyl alcohol impregnated and come in a tub of 75. The lid is easy to use and helps prevent the wipes drying out quickly.



Code	Description
99910075	Acu-Tech Polyweld Wipes -Tub of 75

Countdown Fusion Timer

Handy countdown timer for cooldown times in electrofusion and butt welds. Includes a basic clock.



Code	Description
701-0100	Acu-Tech Timer

FLUKE 62 MAX Infrared Thermometer

The Fluke 62 MAX Infrared thermometer features a single laser and 10:1 distance to spot ratio. It is small in size and extremely easy to use. The single laser helps you pinpoint the target for more accurate readings and makes it easier to measure temperatures in hard to reach areas. With its IP54 rating for dust and water resistance you can rely on the Fluke 62 MAX to deliver accurate, repeatable temperature measurements.



Code	Description
702-1050	Fluke 62 max Infrared Thermometer

Acu-Tech Digital Surface Thermometer

Quality digital thermometer with K type probe interface. Range of -200 to 1370°. Also has a Timer function, PC interface and Auto Power Off. (probe ordered separate)

Surface probe suitable for heater plate check. Range of -50 to 400°C.



Code	Description
702-2050	Acu-Tech Digital Surface Thermometer
702-3005	Surface Probe – Right Angled, Handheld

Are you an Accredited Poly Welder?

Polyweld Tech Academy offers training in certified units of competency for:

- ✓ HDPE Butt Welding— High & Low Pressure (PMBWELD301)
- ✓ Electro Fusion Welding (PMBWELD302)
- ✓ Extrusion Welding (PMBWELD309)

Our welding courses are held either at our own training facility in Perth or anywhere in Australia that is convenient for your organisation. Courses include theoretical knowledge and hands on practice using a range of welding machines combined with the latest technology and industry developments to ensure you gain the most experience from your course.

At completion you will be confident in welding techniques and will be given a certificate, stamp and welder card from an expert in the industry.

Contact PolyWeld Tech today



08 9452 3000



info@polyweldtech.com.au



www.polyweldtech.com.au



Do you need Weld Testing done?



Polyweld Tech Academy is equipped with NATA accredited testing facilities specialising in tensile testing of butt welds and peel decohesions for Electrofusion welds along with a complete range of QA/QC tests. With the latest technology and experienced technicians, we guarantee accurate and fast results .

PolyWeld Tech



08 9452 3000



info@polyweldtech.com.au



1300 270 270



equip@acu-tech.com.au



www.acu-tech.com.au